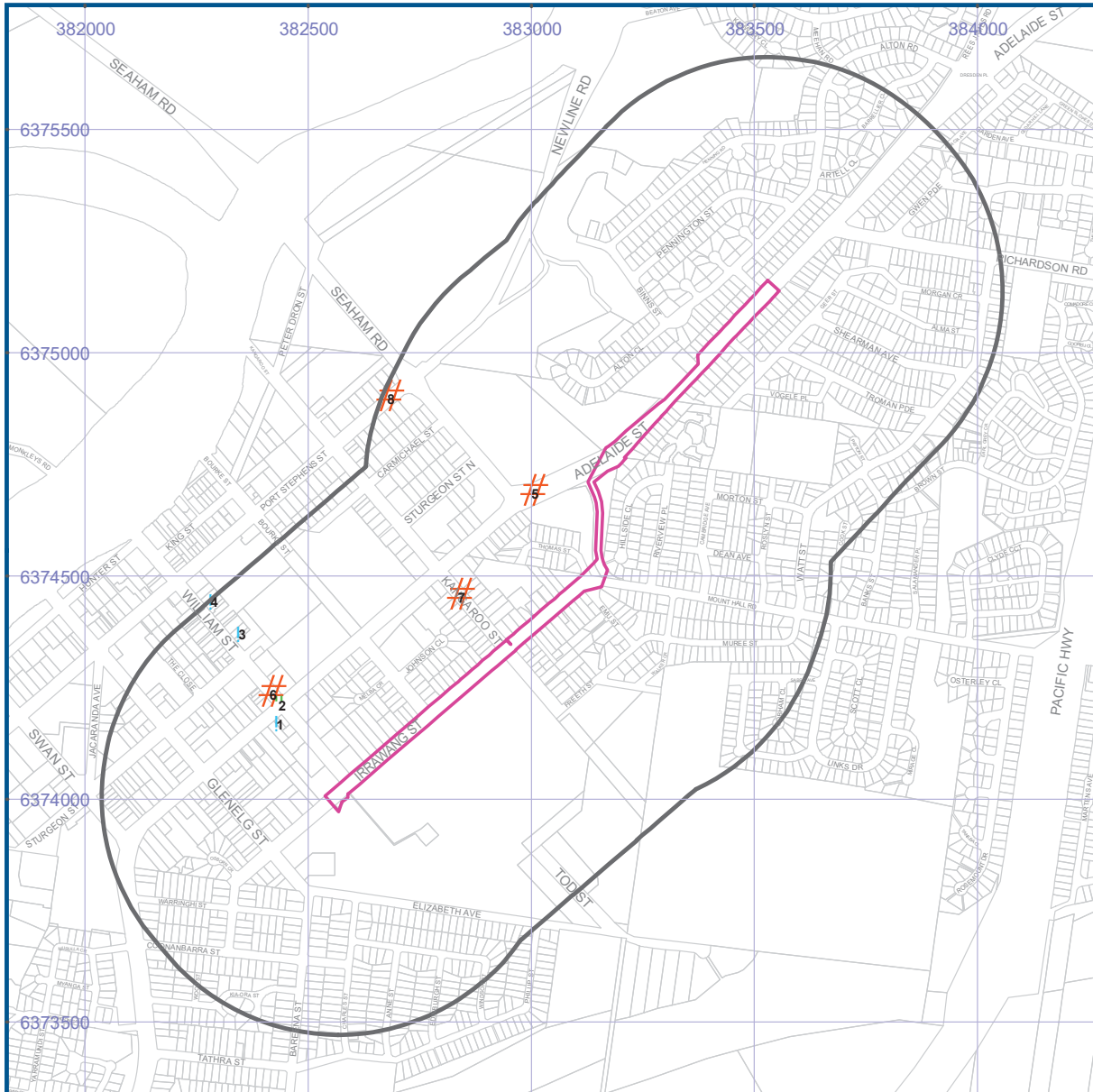





Historical Business Directories





Kings Hill-Raymond Terrace Alignment, Pacific Highway, Raymond Terrace, NSW 2324 (Part 4)

Dry Cleaners, Motor Garages & Service Stations



-  Site Boundary
-  Buffer 500m
-  Property Boundaries

Projected Coordinate System:
GDA94 MGA Zone 56

-  Business directory records mapped to a specific premise
-  Business directory records mapped to a road intersection
-  Business directory records mapped to a road corridor
-  Business directory records mapped to a general area

Data Sources: Universal Business Directories (UBD), derived data, licensed from Hardie Grant.
Property Boundaries © NSW Department Finance, Services & Innovation 2019

Historical Business Directories

Kings Hill-Raymond Terrace Alignment, Pacific Highway, Raymond Terrace, NSW 2324 (Part 4)

Dry Cleaners, Motor Garages & Service Stations Premise or Road Intersection Matches

Dry Cleaners, Motor Garages & Service Stations from UBD Business Directories, mapped to a premise or road intersection, within the dataset buffer.

Map Id	Business Activity	Premise	Ref No.	Year	Location Confidence	Distance to Property Boundary or Road Intersection	Direction
1	MOTOR SERVICE STATIONS-PETROL, OILS, ETC.	Raymond Terrace Filling Station, 149 Adelaide St., Raymond Terrace	168533	1961	Premise Match	173m	South West
2	MOTOR SERVICE STATIONS-PETROL, OILS, ETC.	Pacific Service Station, Cnr. William St & Pacific Highway., Raymond Terrace	168531	1961	Road Intersection	216m	South West
	MOTOR GARAGE & SERVICE STATION	Kime & Stephen Pacific Highway. & William St., Raymond Terrace Raymond Terrace	155538	1950	Road Intersection	216m	South West
	MOTOR GARAGES & ENGINEERS	Kime and Stephen, Pacific Highway. and William St. Raymond Terrace	155587	1950	Road Intersection	216m	South West
	MOTOR SERVICE STATIONS.	Kime and Stephen, Pacific Highway. and William St. Raymond Terrace	155593	1950	Road Intersection	216m	South West
3	DRY CLEANERS & PRESSERS.	Drycleaners., 47 William St, Raymond Terrace	93747	1991	Premise Match	392m	West
	DRY CLEANERS & PRESSERS.	Drycleaners., 47 William St, Raymond Terrace	93748	1991	Premise Match	392m	West
4	DRY CLEANERS, PRESSERS & DYERS	Pembroke's Dry Cleaning Service, 25 William St., Raymond Terrace	623953	1970	Premise Match	485m	West
	DRY CLEANERS, PRESSERS & DYERS	Pembroke's Dry Cleaning Service, 25 William St., Raymond Terrace	168389	1961	Premise Match	485m	West

Business Directory Content Derived from Universal Business Directories (UBD) - Licensed from Hardie Grant

Dry Cleaners, Motor Garages & Service Stations Road or Area Matches

Dry Cleaners, Motor Garages & Service Stations from UBD Business Directories, mapped to a road or an area, within the dataset buffer. Records are mapped to the road when a building number is not supplied, cannot be found, or the road has been renumbered since the directory was published.

Map Id	Business Activity	Premise	Ref No.	Year	Location Confidence	Distance to Road Corridor or Area
5	MOTOR GARAGES & SERVICE STATIONS.	Ampol Service Station., Pacific Hwy, Raymond Terrace	93872	1991	Road Match	0m
	MOTOR GARAGES & SERVICE STATIONS.	Bogas., Pacific Hwy Heatherbrae, Raymond Terrace	93873	1991	Road Match	0m
	MOTOR GARAGES & SERVICE STATIONS.	Bogas., Pacific Hwy, Raymond Terrace	93874	1991	Road Match	0m
	MOTOR GARAGES & SERVICE STATIONS.	N R Ma Depot., 189 Pacific Hwy, Raymond Terrace	93880	1991	Road Match	0m
	MOTOR GARAGES & SERVICE STATIONS.	Roadhouse., Pacific Hwy, Raymond Terrace	93871	1991	Road Match	0m
	MOTOR GARAGES & SERVICE STATIONS.	Terrace Service Station., Pacific Hwy, Raymond Terrace	93881	1991	Road Match	0m
	MOTOR GARAGES & SERVICE STATIONS.	Williams River Auto Port., Pacific Hwy, Raymond Terrace	93882	1991	Road Match	0m
	MOTOR SERVICE STATIONS-PETROL, OILS, ETC.	Ampol Service Station, Pacific Hghwy., Raymond Terrace	624028	1970	Road Match	0m
	MOTOR SERVICE STATIONS-PETROL, OILS, ETC.	B.P. Green Hill Park Service Station, 243 Pacific Hghwy., Raymond Terrace	624029	1970	Road Match	0m
	MOTOR GARAGES & ENGINEERS	Kime & Stephen Pty. Ltd., Pacific Hghwy., Raymond Terrace	624022	1970	Road Match	0m
	MOTOR SERVICE STATIONS-PETROL, OILS, ETC.	Raymond Terrace Auto Chef, Pacific Hghwy., Raymond Terrace	624031	1970	Road Match	0m
	MOTOR SERVICE STATIONS-PETROL, OILS, ETC.	Snappy Jack's Auto Port, 149 Pacific Hghwy., Raymond Terrace	624032	1970	Road Match	0m
	MOTOR GARAGES & ENGINEERS	Total Raymond Terrace Service Station, Pacific Hghwy., Raymond Terrace	624023	1970	Road Match	0m
	MOTOR GARAGES & ENGINEERS	William's River Auto Port, Pacific Hghwy., Raymond Terrace	624024	1970	Road Match	0m
	MOTOR GARAGES & ENGINEERS	Coulter Motors, Old Site, Pacific Highway., Raymond Terrace	168518	1961	Road Match	0m
	MOTOR SERVICE STATIONS-PETROL, OILS, ETC.	Coulter Motors, Pacific Highway., Raymond Terrace	168528	1961	Road Match	0m
	MOTOR SERVICE STATIONS-PETROL, OILS, ETC.	Highway Service Station, Pacific Highway, Raymond Terrace	168529	1961	Road Match	0m
	MOTOR GARAGES & ENGINEERS	Kime and Stephen Pty. Ltd., Pacific Highway., Raymond Terrace	168519	1961	Road Match	0m
	MOTOR SERVICE STATIONS-PETROL, OILS, ETC.	Raymond Terrace Auto Port, Pacific Highway., Raymond Terrace	168532	1961	Road Match	0m
	MOTOR GARAGES & ENGINEERS	Terrace Service Station (The), Pacific Highway., Raymond Terrace	168520	1961	Road Match	0m
	MOTOR SERVICE STATIONS-PETROL, OILS, ETC.	Terrace Service Station (The), Pacific Highway., Raymond Terrace	168534	1961	Road Match	0m
	MOTOR SERVICE STATIONS.	Raymond Terrace Filling Station (R. F. Ingham), Pacific Highway. Raymond Terrace	155595	1950	Road Match	0m
6	MOTOR GARAGES & SERVICE STATIONS.	Bp Pacific Service Station., William St, Raymond Terrace	93876	1991	Road Match	0m
	MOTOR SERVICE STATIONS-PETROL, OILS, ETC.	Pacific Service Station, William St., Raymond Terrace	624030	1970	Road Match	0m

Map Id	Business Activity	Premise	Ref No.	Year	Location Confidence	Distance to Road Corridor or Area
6	MOTOR GARAGES & ENGINEERS	Glover, A. E., William St. Raymond Terrace	155586	1950	Road Match	0m
	MOTOR SERVICE STATIONS.	Raymond Terrace Motor Repair Service (A. E. Glover), William St. Raymond Terrace	155596	1950	Road Match	0m
7	MOTOR GARAGES & SERVICE STATIONS.	Garys Auto Centre., Kangaroo St, Raymond Terrace	93877	1991	Road Match	0m
	MOTOR GARAGES & SERVICE STATIONS.	Garys Auto Centre., Kangaroo St, Raymond Terrace	93878	1991	Road Match	0m
8	DRY CLEANERS, PRESSERS & DYERS	Select Dry Cleaning, Port Stephens St. Raymond Terrace	155543	1950	Road Match	449m

Business Directory Content Derived from Universal Business Directories (UBD) - Licensed from Hardie Grant

Aerial Imagery 2015

Kings Hill-Raymond Terrace Alignment, Pacific Highway, Raymond Terrace, NSW 2324 (Part 4)



Aerial Imagery 2010

Kings Hill-Raymond Terrace Alignment, Pacific Highway, Raymond Terrace, NSW 2324 (Part 4)



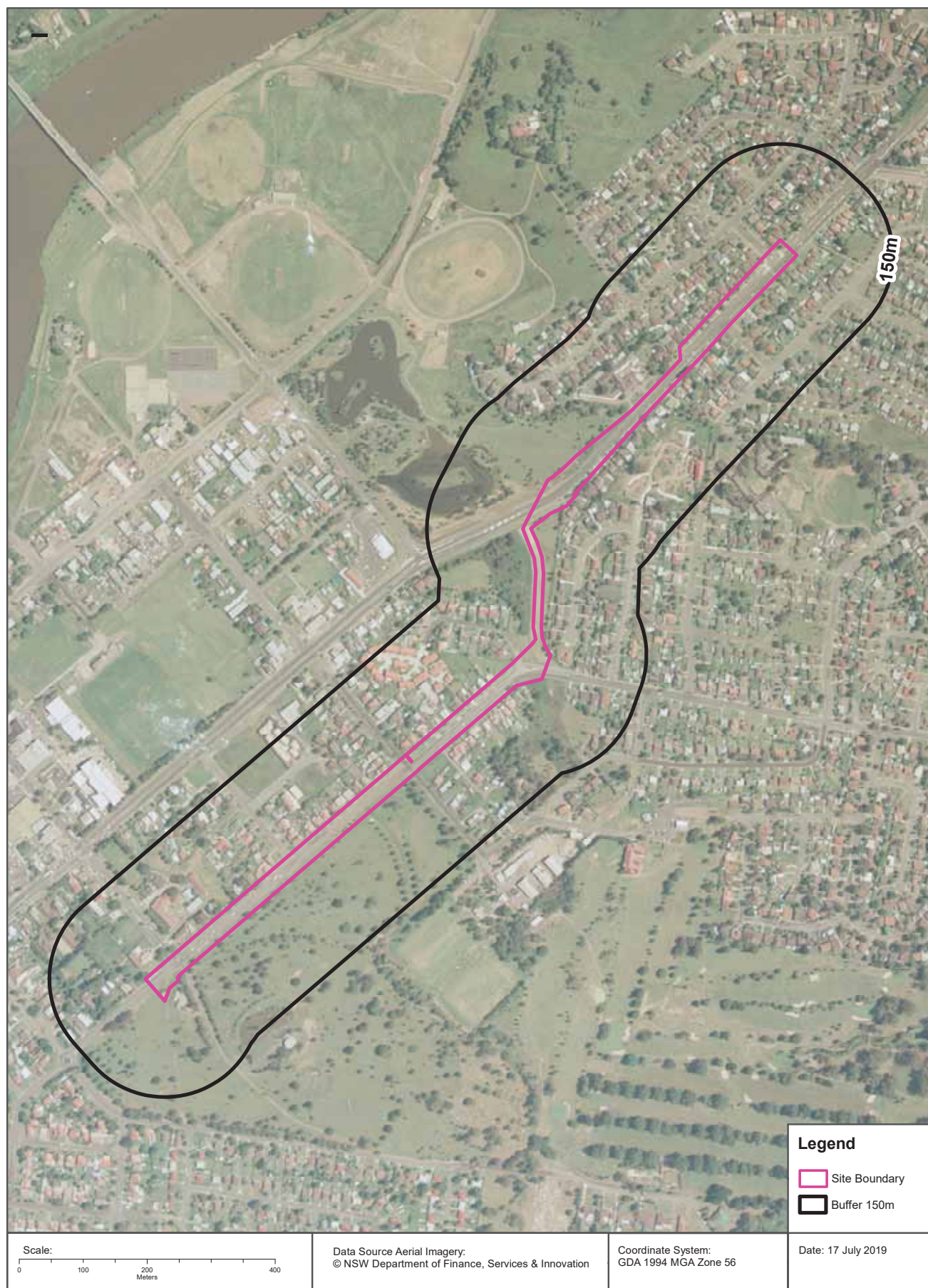
Aerial Imagery 2004

Kings Hill-Raymond Terrace Alignment, Pacific Highway, Raymond Terrace, NSW 2324 (Part 4)



Aerial Imagery 1993

Kings Hill-Raymond Terrace Alignment, Pacific Highway, Raymond Terrace, NSW 2324 (Part 4)



Aerial Imagery 1984

Kings Hill-Raymond Terrace Alignment, Pacific Highway, Raymond Terrace, NSW 2324 (Part 4)



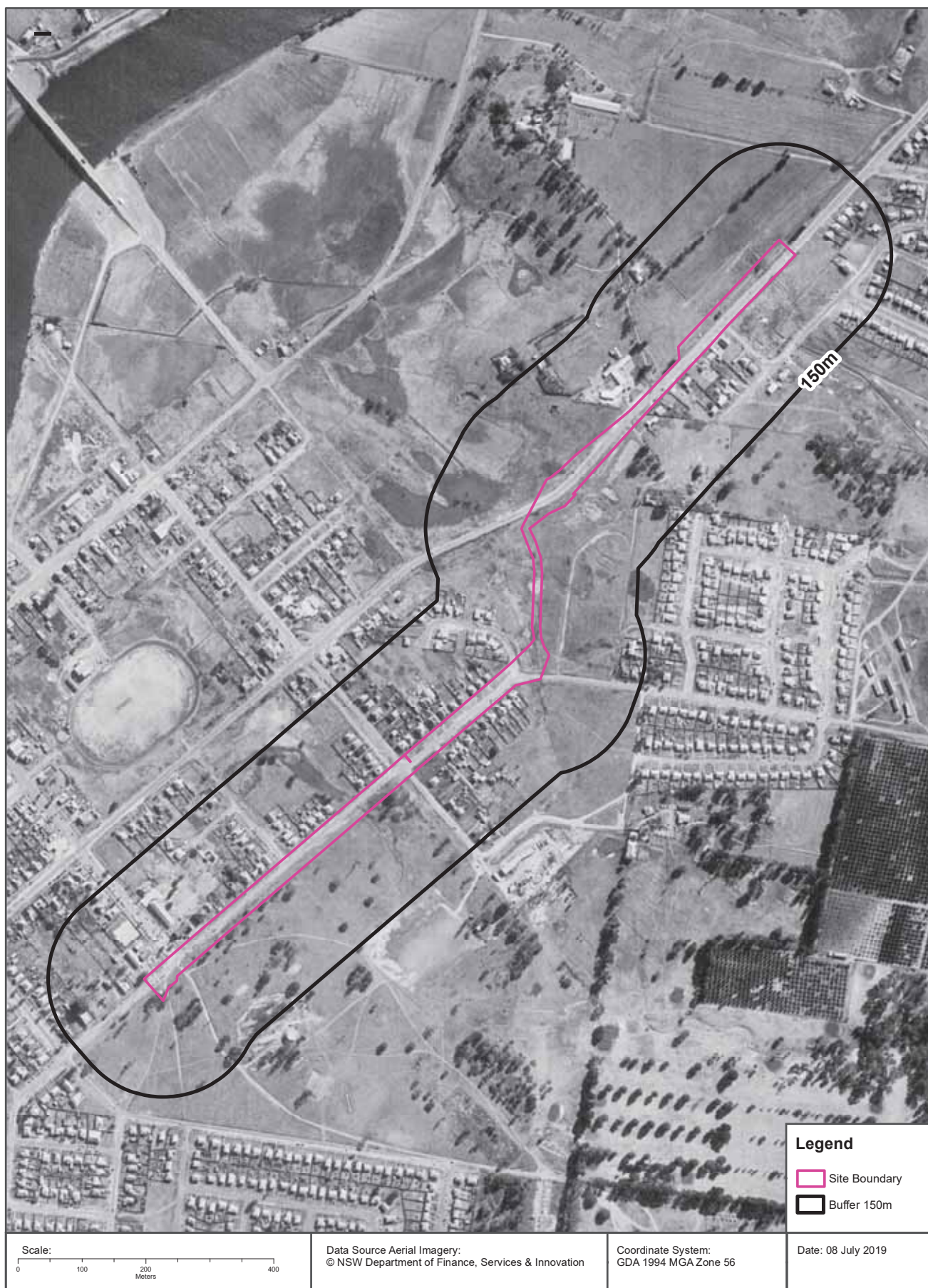
Aerial Imagery 1976

Kings Hill-Raymond Terrace Alignment, Pacific Highway, Raymond Terrace, NSW 2324 (Part 4)



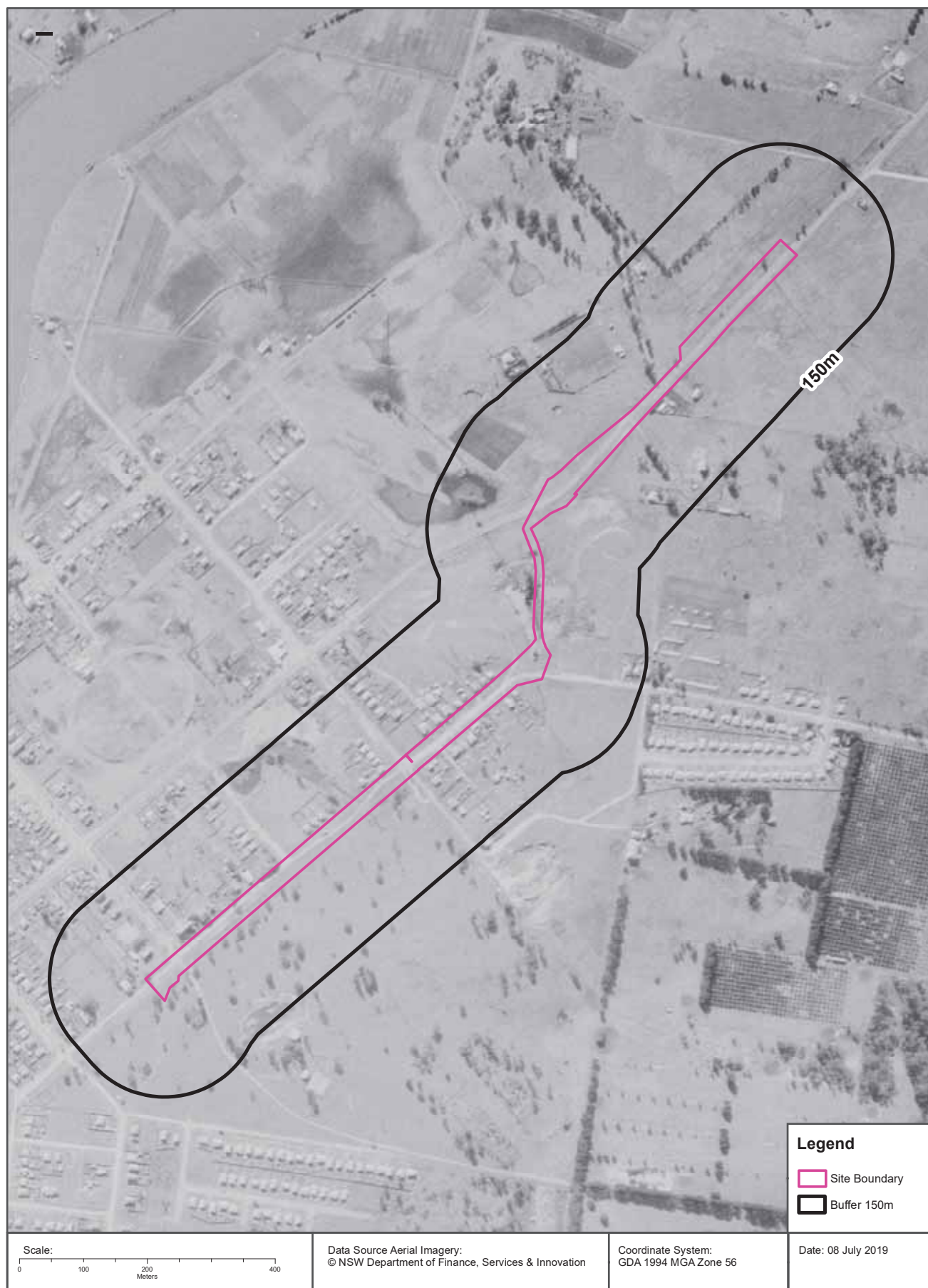
Aerial Imagery 1966

Kings Hill-Raymond Terrace Alignment, Pacific Highway, Raymond Terrace, NSW 2324 (Part 4)



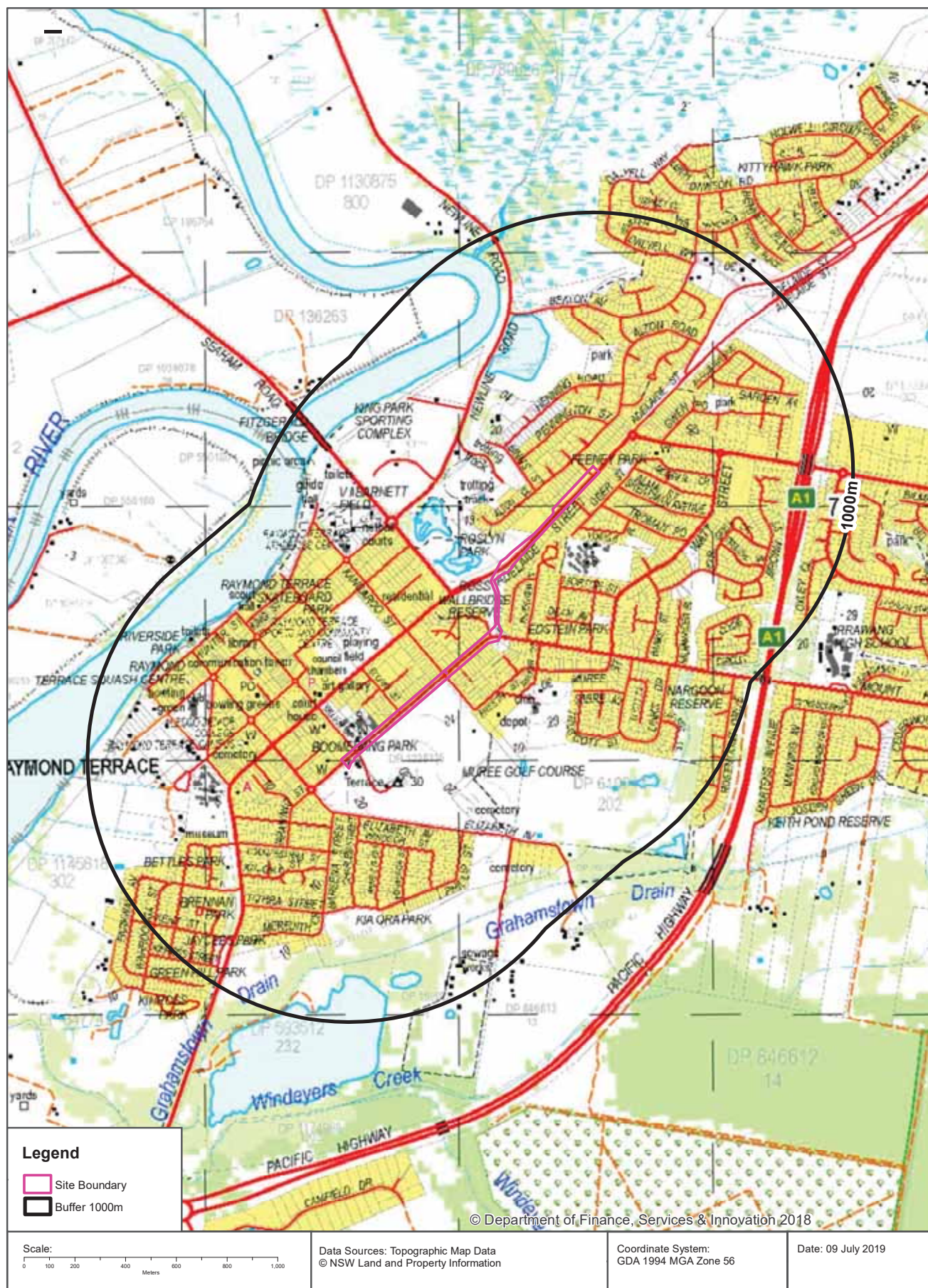
Aerial Imagery 1954

Kings Hill-Raymond Terrace Alignment, Pacific Highway, Raymond Terrace, NSW 2324 (Part 4)



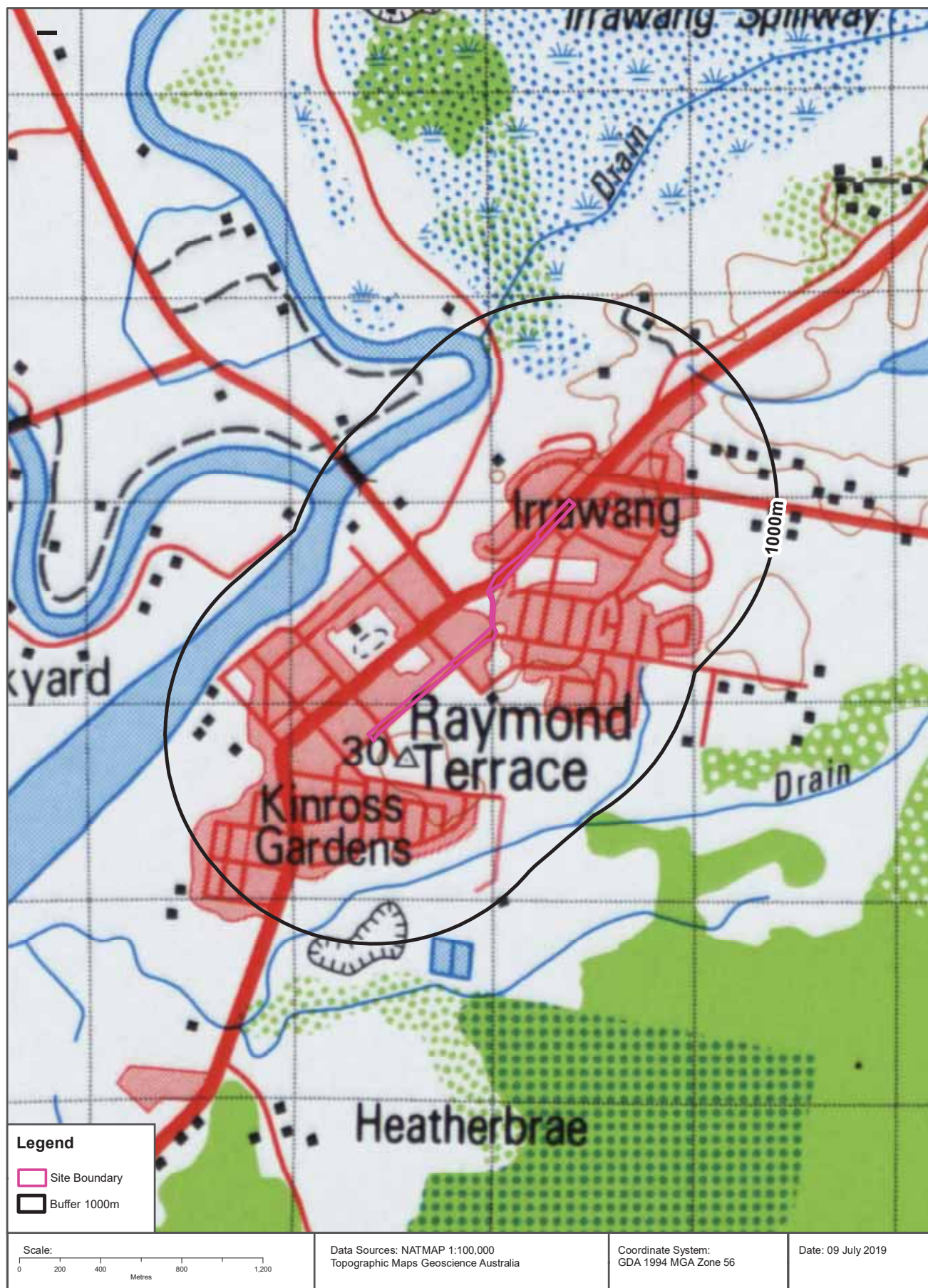
Topographic Map 2015

Kings Hill-Raymond Terrace Alignment, Pacific Highway, Raymond Terrace, NSW 2324 (Part 4)



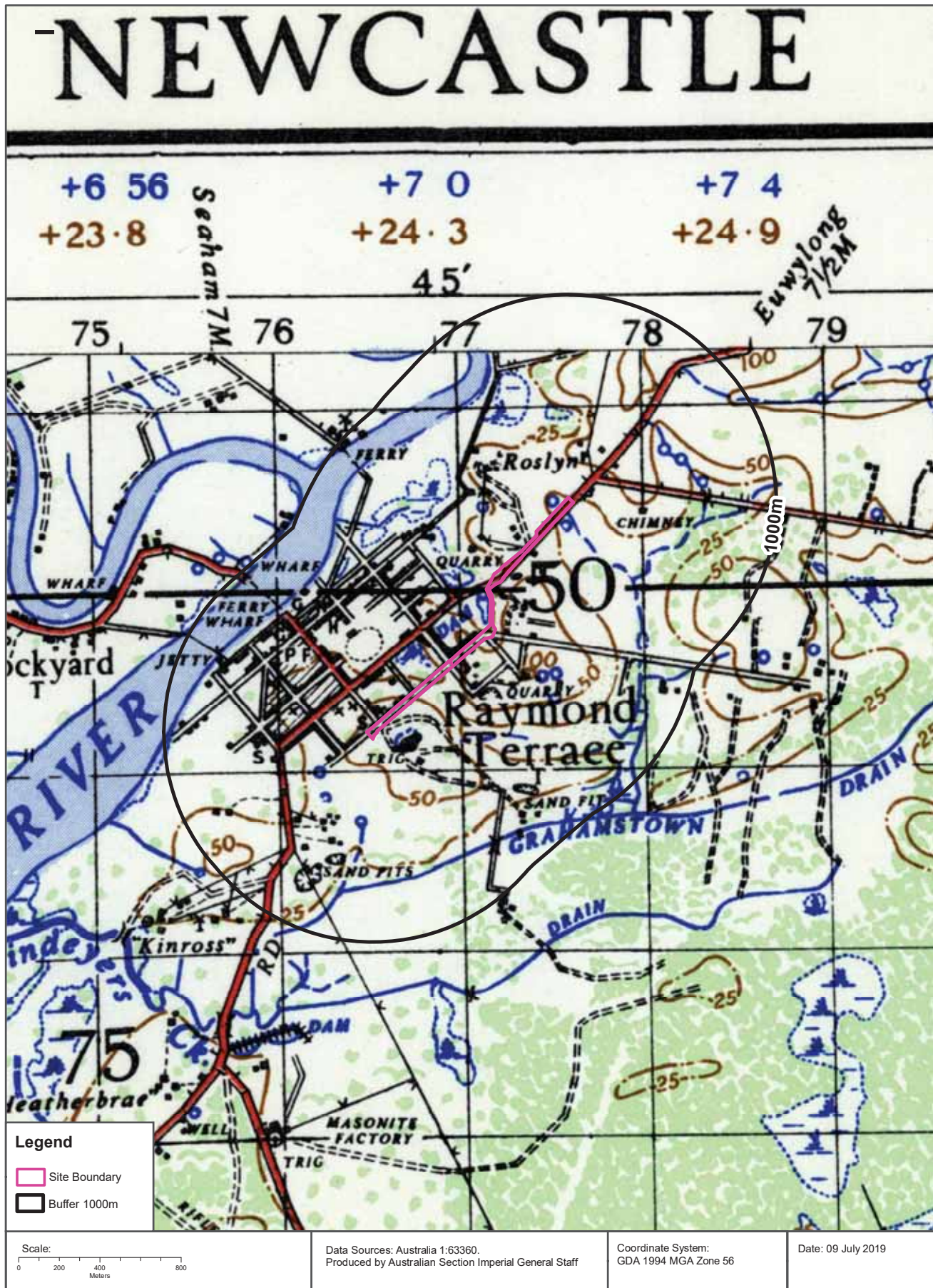
Historical Map 1981

Kings Hill-Raymond Terrace Alignment, Pacific Highway, Raymond Terrace, NSW 2324 (Part 4)



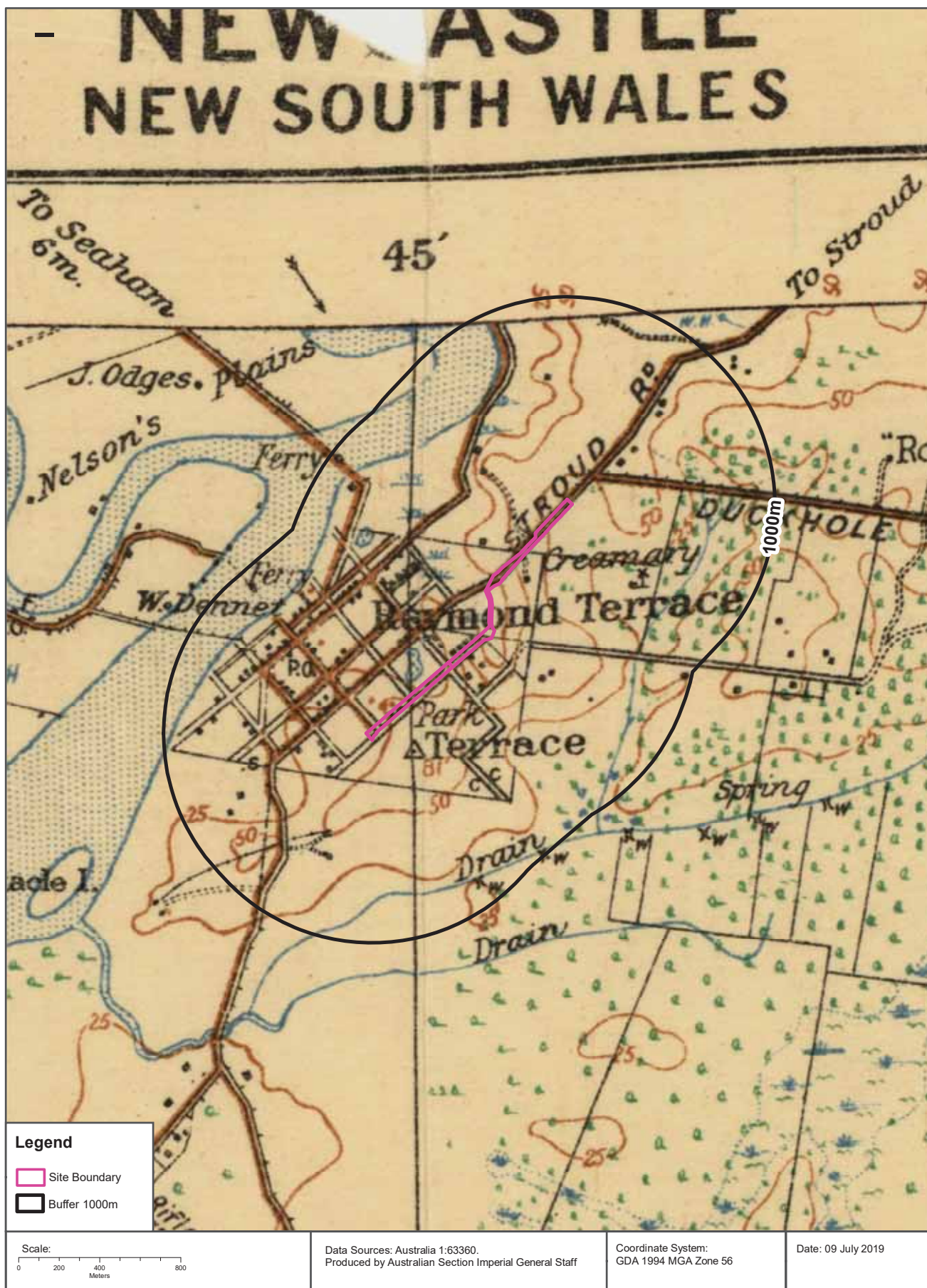
Historical Map c.1941

Kings Hill-Raymond Terrace Alignment, Pacific Highway, Raymond Terrace, NSW 2324 (Part 4)



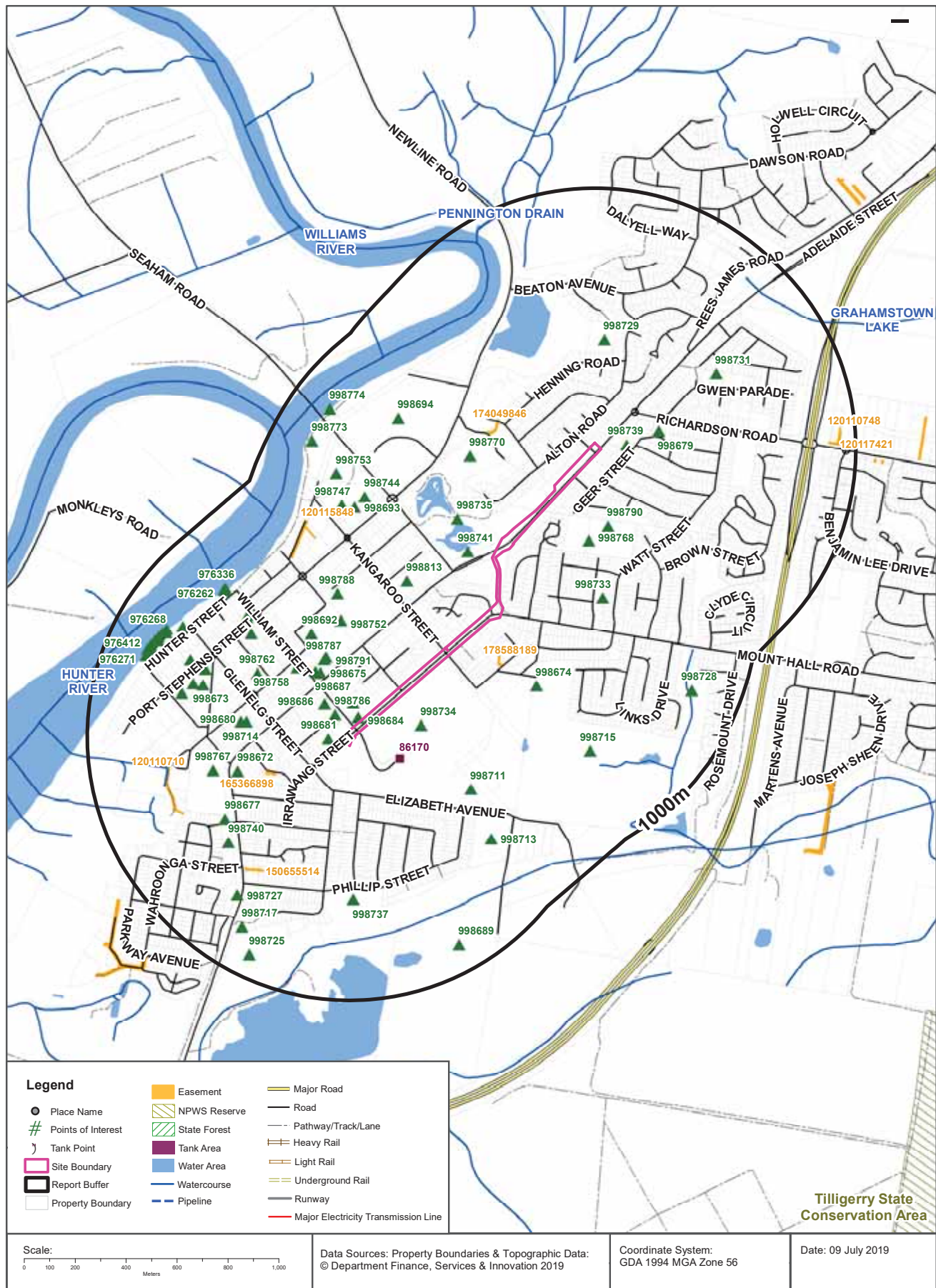
Historical Map c.1913

Kings Hill-Raymond Terrace Alignment, Pacific Highway, Raymond Terrace, NSW 2324 (Part 4)



Topographic Features

Kings Hill-Raymond Terrace Alignment, Pacific Highway, Raymond Terrace, NSW 2324 (Part 4)



Topographic Features

Kings Hill-Raymond Terrace Alignment, Pacific Highway, Raymond Terrace, NSW 2324 (Part 4)

Points of Interest

What Points of Interest exist within the dataset buffer?

Map Id	Feature Type	Label	Distance	Direction
998684	Place Of Worship	CATHOLIC CHURCH	18m	South West
998681	Place Of Worship	PRESBYTERIAN CHURCH	57m	South West
998763	Primary School	ST BRIGID'S PRIMARY SCHOOL	74m	South West
998786	Retirement Village	MAGNOLIA GARDENS RETIREMENT VILLAGE	85m	South West
998739	Park	FEENEY PARK	97m	North East
998741	Park	ROSS WALLBRIDGE RESERVE	102m	North
998734	Park	BOOMERANG PARK	135m	South West
998686	Place Of Worship	UNITING CHURCH	145m	South West
998735	Park	ROSLYN PARK	194m	North
998768	Primary School	IRRAWANG PUBLIC SCHOOL	209m	North East
998790	Preschool	IRRAWANG PUBLIC SCHOOL PRESCHOOL	225m	North East
998679	Place Of Worship	BRETHREN CHURCH	232m	North East
998675	Court House	RAYMOND TERRACE COURT HOUSE	247m	South West
998687	Police Station	RAYMOND TERRACE POLICE STATION	264m	South West
998787	Art Gallery	Art Gallery	277m	West
998791	Local Government Chambers	PORT STEPHENS COUNCIL	280m	West
998813	Nursing Home	OPAL RAYMOND TERRACE	300m	West
998674	Club	MUREE GOLF CLUB	302m	South East
998698	Tourist Information Centre	RAYMOND TERRACE VISITOR INFORMATION CENTRE	323m	West
998770	Trotting Track	JACK JOHNSON TROTting TRACK	331m	North
998752	Sports Field	PLAYING FIELD	351m	West
998680	Place Of Worship	ANGLICAN CHURCH	381m	South West
998758	Town	RAYMOND TERRACE	383m	South West
998692	Sports Centre	RAYMOND TERRACE SPORTS AND COMMUNITY CENTRE	386m	West
998733	Park	EDSTEIN PARK	389m	East
998714	Cemetery	RAYMOND TERRACE ANGLICAN CEMETERY	402m	South West
998729	Park	Park	408m	North East
998762	Post Office	RAYMOND TERRACE POST OFFICE	416m	West
998672	Ambulance Station	RAYMOND TERRACE AMBULANCE STATION	432m	South West
998788	Sports Court	RAYMOND TERRACE SKATEBOARD PARK	440m	West

Map Id	Feature Type	Label	Distance	Direction
998711	Cemetery	PIONEER HILL CEMETERY	453m	South
998767	Primary School	RAYMOND TERRACE PUBLIC SCHOOL	524m	South West
998731	Park	Park	536m	North East
998785	Medical Centre	RAYMOND TERRACE COMMUNITY HEALTH CENTRE	541m	West
998744	Sports Court	NETBALL COURTS	557m	North West
998677	Museum	SKETCHLEY PIONEER COTTAGE	563m	South West
998693	Sports Centre	RAYMOND TERRACE ATHLETICS CENTRE	578m	North West
998754	Sports Field	BOWLING GREENS	583m	West
998732	Park	RAYMOND TERRACE ANZAC PARK	600m	West
997590	Special School	ALESCO SENIOR COLLEGE RAYMOND TERRACE CAMPUS	601m	West
998737	Park	KIA ORA PARK	603m	South
998772	Library	RAYMOND TERRACE LIBRARY	604m	West
998740	Park	BETTLES PARK	609m	South West
998673	Club	RAYMOND TERRACE BOWLING CLUB	621m	West
998694	Sports Centre	KING PARK SPORTING COMPLEX	625m	North West
998747	Sports Court	TENNIS COURTS	628m	North West
998715	Golf Course	MUREE GOLF COURSE	630m	South East
998713	Cemetery	RAYMOND TERRACE CEMETERY	653m	South
998749	Sports Field	BOWLING GREEN	653m	West
998745	Sports Court	RAYMOND TERRACE SQUASH CENTRE	668m	West
998753	Sports Field	V I BARNETT FIELD	698m	North West
976272	Wharf	RAYMOND TERRACE WHARF	733m	West
998727	Park	BRENNAN PARK	734m	South West
976336	Wharf	Wharf	740m	West
976262	Wharf	Wharf	741m	West
998726	Park	RIVERSIDE PARK	762m	West
998728	Park	NARGOON RESERVE	802m	South East
976268	Wharf	Wharf	802m	West
976266	Wharf	Wharf	808m	West
976267	Wharf	Wharf	814m	West
976269	Wharf	Wharf	815m	West
976263	Wharf	Wharf	821m	West
976264	Wharf	Wharf	826m	West
976270	Wharf	Wharf	827m	West
998717	Park	JAYCEES PARK	829m	South West
976271	Boat Ramp	Boat Ramp	833m	West
976412	Wharf	Wharf	833m	West

Map Id	Feature Type	Label	Distance	Direction
976265	Wharf	Wharf	838m	West
998773	Picnic Area	Picnic Area	840m	North West
998774	Boat Ramp	Boat Ramp	847m	North West
998689	Sewage Works	Sewage Works	890m	South
998725	Park	GREEN HILL PARK	910m	South West

Topographic Data Source: © Land and Property Information (2015)

Creative Commons 3.0 © Commonwealth of Australia <http://creativecommons.org/licenses/by/3.0/au/deed.en>

Topographic Features

Kings Hill-Raymond Terrace Alignment, Pacific Highway, Raymond Terrace, NSW 2324 (Part 4)

Tanks (Areas)

What are the Tank Areas located within the dataset buffer?

Note. The large majority of tank features provided by LPI are derived from aerial imagery & are therefore primarily above ground tanks.

Map Id	Tank Type	Status	Name	Feature Currency	Distance	Direction
	No records in buffer					

Tanks (Points)

What are the Tank Points located within the dataset buffer?

Note. The large majority of tank features provided by LPI are derived from aerial imagery & are therefore primarily above ground tanks.

Map Id	Tank Type	Status	Name	Feature Currency	Distance	Direction
86170	Water	Operational		14/07/2018	182m	South West

Tanks Data Source: © Land and Property Information (2015)

Creative Commons 3.0 © Commonwealth of Australia <http://creativecommons.org/licenses/by/3.0/au/deed.en>

Major Easements

What Major Easements exist within the dataset buffer?

Note. Easements provided by LPI are not at the detail of local governments. They are limited to major easements such as Right of Carriageway, Electrical Lines (66kVa etc.), Easement to drain water & Significant subterranean pipelines (gas, water etc.).

Map Id	Easement Class	Easement Type	Easement Width	Distance	Direction
178588189	Primary	Right of way	3.5m and VAR	127m	South
166809497	Secondary	17	3.3	292m	West
166809498	Secondary	17	0.4	292m	West
165366898	Secondary	Easement for Access		299m	South West
174049846	Primary	Right of way	5 Wide & VAR	318m	North
150655514	Primary	Right of way	var	597m	South West
120115848	Primary	Undefined		662m	West
120110710	Primary	Undefined		690m	South West
120117421	Primary	Undefined		889m	North East
120110748	Primary	Undefined		920m	North East

Easements Data Source: © Land and Property Information (2015)

Creative Commons 3.0 © Commonwealth of Australia <http://creativecommons.org/licenses/by/3.0/au/deed.en>

Topographic Features

Kings Hill-Raymond Terrace Alignment, Pacific Highway, Raymond Terrace, NSW 2324 (Part 4)

State Forest

What State Forest exist within the dataset buffer?

State Forest Number	State Forest Name	Distance	Direction
N/A	No records in buffer		

State Forest Data Source: © NSW Department of Finance, Services & Innovation (2018)
Creative Commons 3.0 © Commonwealth of Australia <http://creativecommons.org/licenses/by/3.0/au/deed.en>

National Parks and Wildlife Service Reserves

What NPWS Reserves exist within the dataset buffer?

Reserve Number	Reserve Type	Reserve Name	Gazetted Date	Distance	Direction
N/A	No records in buffer				

NPWS Data Source: © NSW Department of Finance, Services & Innovation (2018)
Creative Commons 3.0 © Commonwealth of Australia <http://creativecommons.org/licenses/by/3.0/au/deed.en>

Elevation Contours (m AHD)

Kings Hill-Raymond Terrace Alignment, Pacific Highway, Raymond Terrace, NSW 2324 (Part 4)



Hydrogeology & Groundwater

Kings Hill-Raymond Terrace Alignment, Pacific Highway, Raymond Terrace, NSW 2324 (Part 4)

Hydrogeology

Description of aquifers on-site:

Description
Fractured or fissured, extensive aquifers of low to moderate productivity

Description of aquifers within the dataset buffer:

Description
Fractured or fissured, extensive aquifers of low to moderate productivity

Hydrogeology Map of Australia : Commonwealth of Australia (Geoscience Australia)
Creative Commons 3.0 © Commonwealth of Australia <http://creativecommons.org/licenses/by/3.0/au/deed.en>

Botany Groundwater Management Zones

Groundwater management zones relating to the Botany Sand Beds aquifer within the dataset buffer:

Management Zone No.	Restriction	Distance	Direction
N/A	No records in buffer		

Botany Groundwater Management Zones Data Source : NSW Department of Primary Industries

Groundwater Boreholes

Kings Hill-Raymond Terrace Alignment, Pacific Highway, Raymond Terrace, NSW 2324 (Part 4)



Hydrogeology & Groundwater

Kings Hill-Raymond Terrace Alignment, Pacific Highway, Raymond Terrace, NSW 2324 (Part 4)

Groundwater Boreholes

Boreholes within the dataset buffer:

GW No.	Licence No	Work Type	Owner Type	Authorised Purpose	Intended Purpose	Name	Complete Date	Final Depth (m)	Drilled Depth (m)	Salinity (mg/L)	SWL (m)	Yield (L/s)	Elev (AHD)	Dist	Dir
GW066797	20BL145085	Bore	Private	Domestic	Domestic			9.00	9.00		5.00		10.00	613m	South West
GW057300	20BL124878	Spear	Private	Domestic, Stock	General Use		01/08/1982	8.00	8.00					620m	South West
GW078243	20BL166342	Bore		Domestic	Domestic			10.00						636m	South West
GW051395	20BL116531	Spear	Private	Domestic	Domestic		01/01/1980	12.20						636m	South West
GW061003	20BL132652	Spear	Private	Domestic	Domestic		01/10/1985	8.00		0-500 ppm				679m	South West
GW066787	20BL145084	Bore	Private	Domestic	Domestic			9.00	9.00		5.00		12.00	734m	South West
GW200923	20BL166993	Bore	Other Govt	Monitoring Bore	Monitoring Bore		07/09/2005	6.00	6.00	140	3.50			749m	North West
GW200465	20BL168843, 20WA204024	Bore		Domestic	Irrigation		20/08/2003	7.50	7.50		5.60	1.000		954m	South East
GW078223	20BL166428, 20WA203924	Bore		Domestic	Domestic		28/01/1996		10.00					979m	South West
GW057248		Bore	Private		Domestic, Stock		01/07/1982	7.00	7.00	Salty				1017m	East
GW057239	20BL118691	Bore	Private	Domestic	General Use		01/05/1983	7.00	7.00	Brackish				1018m	North East
GW202459	20WA212045	Spear	Other Govt	Dewatering (groundwater)	Dewatering (groundwater)		10/07/2012	4.80	4.80		1.50	0.500		1298m	South
GW200258	20WA203173	Bore		Domestic	Irrigation		21/01/2005	10.50	10.50		6.20	1.000		1448m	East
GW070449	20BL150669, 20WA203912	Spear	Private	Domestic	Domestic		22/09/1992	11.00					10.00	1584m	East
GW202458	20WA212045	Spear	Other Govt	Dewatering (groundwater)	Dewatering (groundwater)		03/07/2012	6.80	6.80		1.00	0.420		1601m	South
21010171					UNK								2.83	1607m	South West
GW079556		Bore												1693m	South East
GW079447		Bore												1711m	South
GW080485	20BL168933	Spear	Private	Domestic	Domestic		24/10/2003							1714m	East
GW202209	20BL169067, 20WA204027	Spear	Private	Domestic	Domestic		04/02/2004	10.60	10.60		6.70	1.000		1784m	East
GW079555		Bore												1791m	South West
GW071574	20BL151938, 20WA203915	Bore	Private	Domestic	Domestic		11/06/1993	11.00	11.00					1845m	East

Borehole Data Source : NSW Department of Primary Industries - Office of Water / Water Administration Ministerial Corporation for all bores prefixed with GW. All other bores © Commonwealth of Australia (Bureau of Meteorology) 2015. Creative Commons 3.0 © Commonwealth of Australia <http://creativecommons.org/licenses/by/3.0/au/deed.en>

Hydrogeology & Groundwater

Kings Hill-Raymond Terrace Alignment, Pacific Highway, Raymond Terrace, NSW 2324 (Part 4)

Driller's Logs

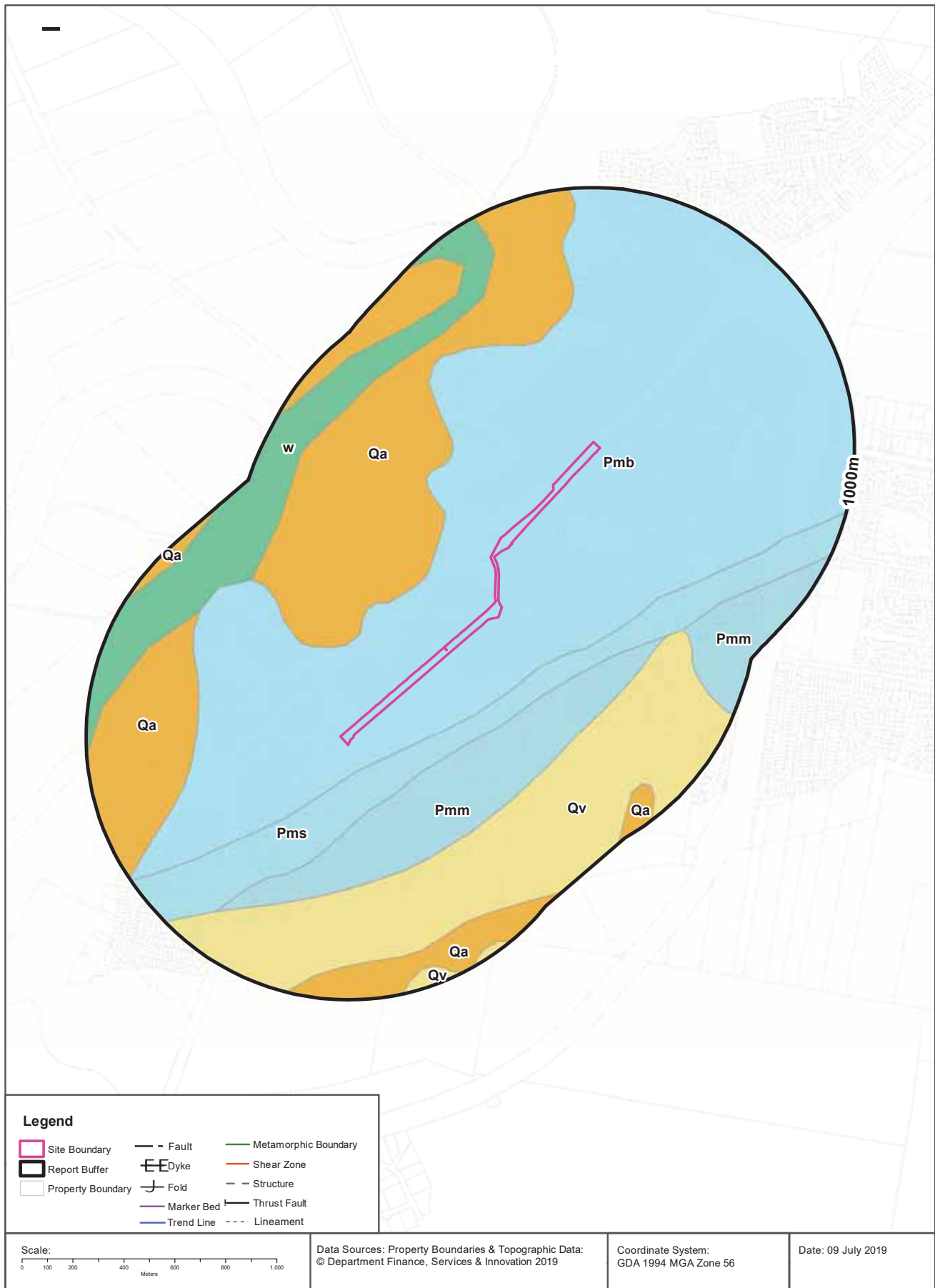
Drill log data relevant to the boreholes within the dataset buffer:

Groundwater No	Drillers Log	Distance	Direction
GW057300	0.00m-8.00m Sand Water Supply	620m	South West
GW200923	0.00m-0.50m GRAVEL SILTY 0.50m-6.00m CLAY	749m	North West
GW200465	0.00m-4.00m sand (amber) 4.00m-7.50m sand (white, coarse with fine gravel)	954m	South East
GW078223	0.00m-2.00m top soil, grey sand at 2m 2.00m-6.00m white sand 6.00m-6.50m white sand 6.50m-7.00m white sand river gravel 7.00m-9.80m coarse white sand 9.80m-10.00m clay	979m	South West
GW057239	0.00m-2.00m Topsoil 2.00m-5.00m Clay Light 5.00m-7.00m Clay Heavy Gravel	1018m	North East
GW200258	0.00m-4.50m sand (amber) 4.50m-5.50m sand (yellow) 5.50m-6.50m sand (white) 6.50m-10.50m sand (greyish brown) + small gravel	1448m	East
GW202209	0.00m-5.00m Sand, coarse, white 5.00m-10.60m Sand, coarse, white, with 6m gravel	1784m	East
GW071574		1845m	East

Drill Log Data Source: NSW Department of Primary Industries - Office of Water / Water Administration Ministerial Corp
Creative Commons 3.0 © Commonwealth of Australia <http://creativecommons.org/licenses/by/3.0/au/deed.en>

Geology 1:250,000

Kings Hill-Raymond Terrace Alignment, Pacific Highway, Raymond Terrace, NSW 2324 (Part 4)



Geology

Kings Hill-Raymond Terrace Alignment, Pacific Highway, Raymond Terrace, NSW 2324 (Part 4)

Geological Units

What are the Geological Units onsite?

Symbol	Description	Unit Name	Group	Sub Group	Age	Dom Lith	Map Sheet	Dataset
Pmb	Conglomerate, sandstone, siltstone	Branxton Formation	Maitland Group		Palaeozoic			1:250,000

What are the Geological Units within the dataset buffer?

Symbol	Description	Unit Name	Group	Sub Group	Age	Dom Lith	Map Sheet	Dataset
Pmb	Conglomerate, sandstone, siltstone	Branxton Formation	Maitland Group		Palaeozoic			1:250,000
Pmm	Siltstone, claystone, minor fine-grained sandstone	Mulbring Siltstone	Maitland Group		Palaeozoic			1:250,000
Pms	Fine to coarse-grained sandstone, conglomerate, minor clay	Muree Sandstone	Maitland Group		Palaeozoic			1:250,000
Qa	Undifferentiated alluvial deposits; sand, silt, clay and gravel; some residual and colluvial deposits. Includes some channel, levee, lacustrine, floodplain and swamp deposits. May include some higher level Tertiary terraces	undifferentiated			Cainozoic			1:250,000
Qv	Formerly Qs on Newcastle coalfield sheet. Described as dune, beach sand but probably includes other Quaternary categories described on Buladelah 1:100 000 sheet				Cainozoic			1:250,000
w	Water				Cainozoic			1:250,000

Geological Structures

What are the Geological Structures onsite?

Feature	Name	Description	Map Sheet	Dataset
No features				1:250,000

What are the Geological Structures within the dataset buffer?

Feature	Name	Description	Map Sheet	Dataset
No features				1:250,000

Geological Data Source : NSW Department of Industry, Resources & Energy

© State of New South Wales through the NSW Department of Industry, Resources & Energy

Naturally Occurring Asbestos Potential

Kings Hill-Raymond Terrace Alignment, Pacific Highway, Raymond Terrace, NSW 2324 (Part 4)

Naturally Occurring Asbestos Potential

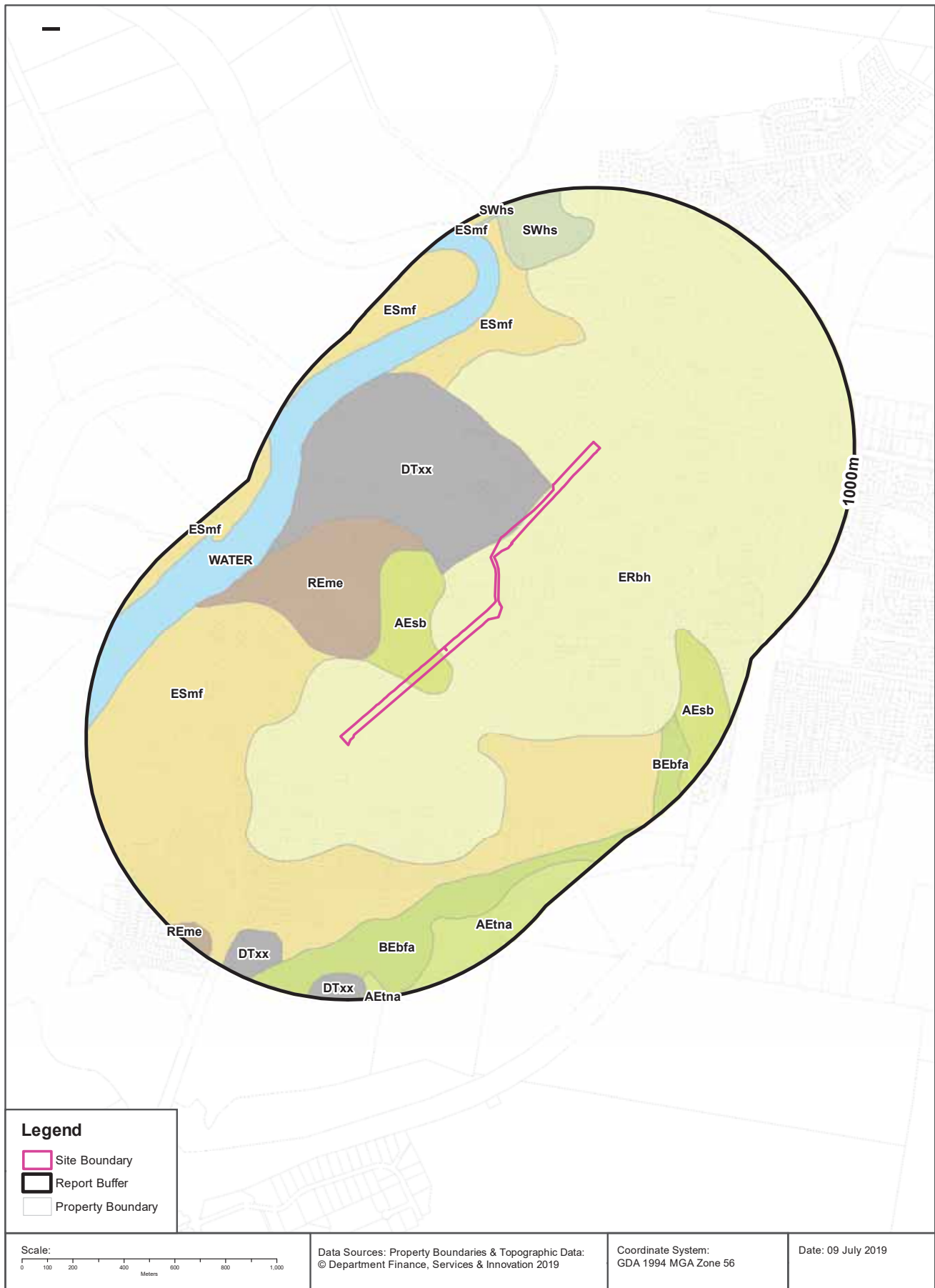
Naturally Occurring Asbestos Potential within the dataset buffer:

Potential	Sym	Strat Name	Group	Formation	Scale	Min Age	Max Age	Rock Type	Dom Lith	Description	Dist	Dir
No records in buffer												

Mining Subsidence District Data Source: © State of New South Wales through NSW Department of Industry, Resources & Energy

Soil Landscapes

Kings Hill-Raymond Terrace Alignment, Pacific Highway, Raymond Terrace, NSW 2324 (Part 4)



Soils

Kings Hill-Raymond Terrace Alignment, Pacific Highway, Raymond Terrace, NSW 2324 (Part 4)

Soil Landscapes

What are the onsite Soil Landscapes?

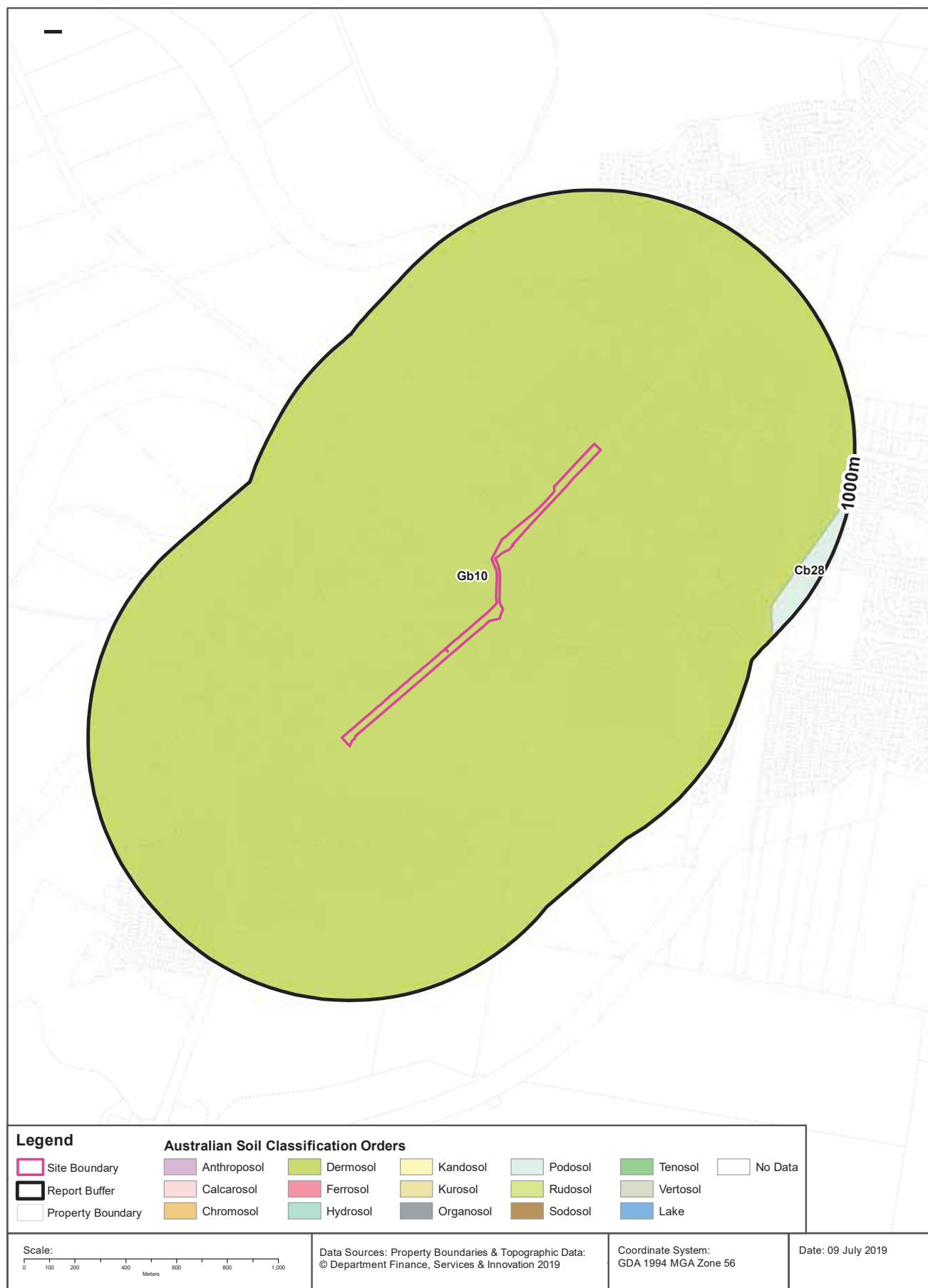
Soil Code	Name	Group	Process	Map Sheet	Scale
AEsb	SHOAL BAY		AEOLIAN	Newcastle	1:100,000
DTxx	DISTURBED TERRAIN		DISTURBED TERRAIN	Newcastle	1:100,000
ERbh	BOLWARRA HEIGHTS		EROSIONAL	Newcastle	1:100,000

What are the Soil Landscapes within the dataset buffer?

Soil Code	Name	Group	Process	Map Sheet	Scale
AEsb	SHOAL BAY		AEOLIAN	Newcastle	1:100,000
AEtna	TEA GARDENS variant a		AEOLIAN	Newcastle	1:100,000
BEbfa	BOBS FARM variant a		BEACH	Newcastle	1:100,000
DTxx	DISTURBED TERRAIN		DISTURBED TERRAIN	Newcastle	1:100,000
ERbh	BOLWARRA HEIGHTS		EROSIONAL	Newcastle	1:100,000
ESmf	MILLERS FOREST		ESTUARINE	Newcastle	1:100,000
REme	MEDOWIE		RESIDUAL	Newcastle	1:100,000
SWhs	HEXHAM SWAMP		SWAMP	Newcastle	1:100,000
WATER	WATER		WATER	Newcastle	1:100,000

Soils Landscapes Data Source : NSW Office of Environment and Heritage

Creative Commons 3.0 © Commonwealth of Australia <http://creativecommons.org/licenses/by/3.0/au/deed.en>



Soils

Kings Hill-Raymond Terrace Alignment, Pacific Highway, Raymond Terrace, NSW 2324 (Part 4)

Atlas of Australian Soils

Soil mapping units and Australian Soil Classification orders within the dataset buffer:

Map Unit Code	Soil Order	Map Unit Description	Distance
Gb10	Dermosol	River terraces, levees, flood-plains, coastal swamps, and tidal flats: this unit contains the same land forms and soils as unit Gb9, but in addition has (i) swamps and levees of the lower river flood-plain of (Uf6.6), (Ug5), and other undescribed soils; (ii) estuarine flats of peaty or organic soils over acid clays; and (iii) tidal mud flats. The soils of these areas are not well known but probably have similarities with the soils of units J3, Mc4, NY1, and NN1. The smaller areas mapped as unit Gb10 consist mainly of areas of (i) and/or (iii) above.	0m
Cb28	Podosol	Undulating coastal plains (ridge and swale sand plains with swampy hollows), tracts of dunes: chief soils are various leached sands (Uc2.3) including (Uc2.33). Associated are tracts of relatively stable dunes of leached sand (Uc2.2); swampy hollows of various acid peats (0) and (Uc2) soils with peaty surfaces; and relatively unstable dunes of calcareous sands (Uc1.1) and/or siliceous sands (Uc1.2) bordering the coast. Compare unit A9. As mapped, low hills of undescribed soils projecting through the sand plain, e.g. Nelson's Bay area, and some coastal swampy areas are included.	898m

Atlas of Australian Soils Data Source: CSIRO

Creative Commons 4.0 © Commonwealth of Australia <http://creativecommons.org/licenses/by/4.0/au/deed.en>

Acid Sulfate Soils

Kings Hill-Raymond Terrace Alignment, Pacific Highway, Raymond Terrace, NSW 2324 (Part 4)



Acid Sulfate Soils

Kings Hill-Raymond Terrace Alignment, Pacific Highway, Raymond Terrace, NSW 2324 (Part 4)

Environmental Planning Instrument - Acid Sulfate Soils

What is the on-site Acid Sulfate Soil Plan Class that presents the largest environmental risk?

Soil Class	Description	EPI Name
5	Works within 500 metres of adjacent Class 1, 2, 3, or 4 land that is below 5 metres AHD and by which the watertable is likely to be lowered below 1 metre AHD on adjacent Class 1, 2, 3 or 4 land, present an environmental risk	Port Stephens Local Environmental Plan 2013

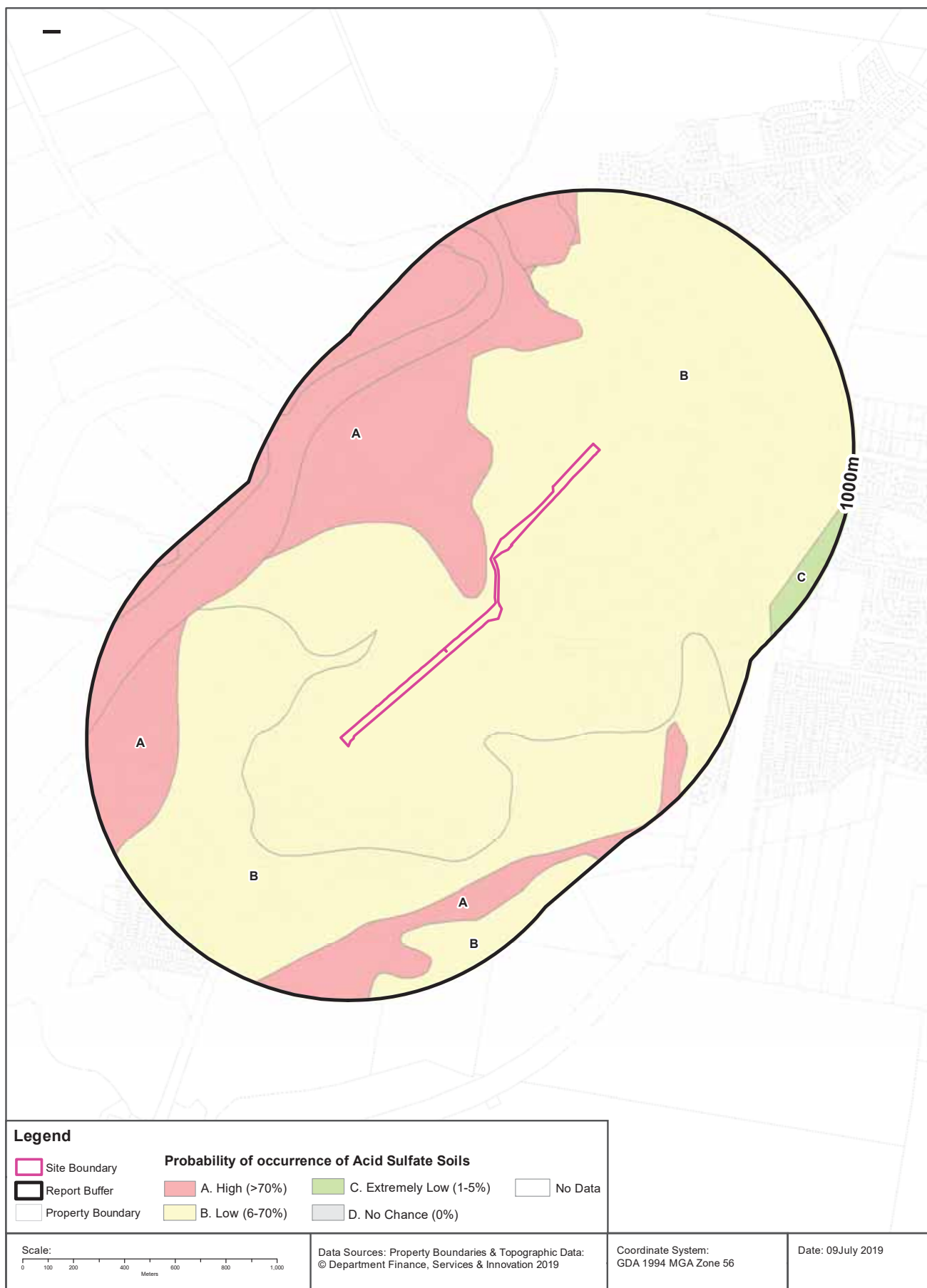
If the on-site Soil Class is 5, what other soil classes exist within 500m?

Soil Class	Description	EPI Name	Distance	Direction
3	Works more than 1 metre below natural ground surface present an environmental risk; Works by which the watertable is likely to be lowered more than 1 metre below natural ground surface, present an environmental risk	Port Stephens Local Environmental Plan 2013	19m	North
4	Works more than 2 metres below natural ground surface present an environmental risk; Works by which the watertable is likely to be lowered more than 2 metres below natural ground surface, present an environmental risk	Port Stephens Local Environmental Plan 2013	185m	South West

Acid Sulfate Data Source Accessed 23/10/2018: NSW Crown Copyright - Planning and Environment
Creative Commons 4.0 © Commonwealth of Australia <https://creativecommons.org/licenses/by/4.0/>

Atlas of Australian Acid Sulfate Soils

Kings Hill-Raymond Terrace Alignment, Pacific Highway, Raymond Terrace, NSW 2324 (Part 4)



Acid Sulfate Soils

Kings Hill-Raymond Terrace Alignment, Pacific Highway, Raymond Terrace, NSW 2324 (Part 4)

Atlas of Australian Acid Sulfate Soils

Atlas of Australian Acid Sulfate Soil categories within the dataset buffer:

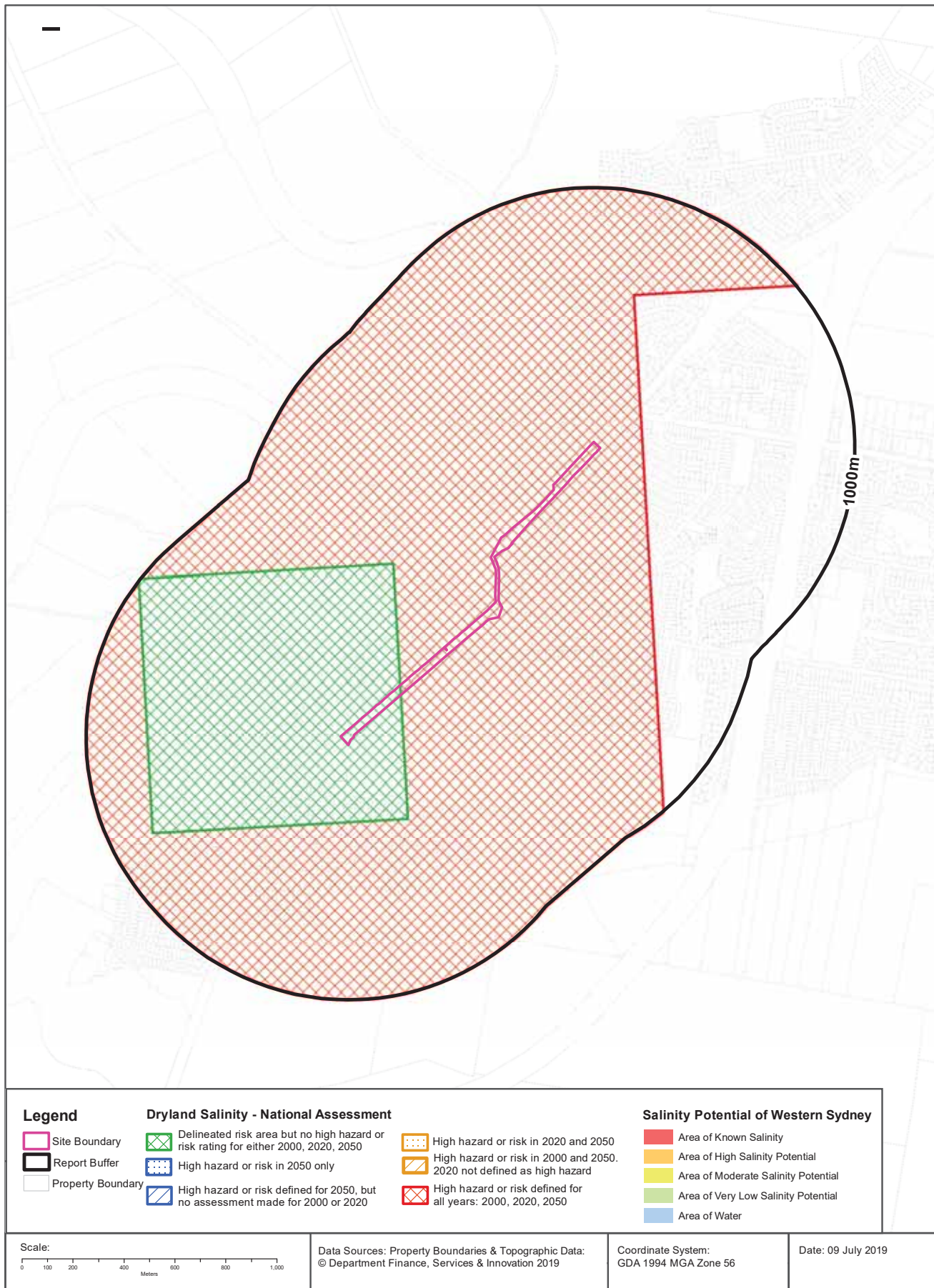
Class	Description	Distance
B	Low Probability of occurrence. 6-70% chance of occurrence.	0m
A	High Probability of occurrence. >70% chance of occurrence.	19m
C	Extremely low probability of occurrence. 1-5% chance of occurrence with occurrences in small localised areas.	897m

Atlas of Australian Acid Sulfate Soils Data Source: CSIRO

Creative Commons 3.0 © Commonwealth of Australia <http://creativecommons.org/licenses/by/3.0/au/deed.en>

Dryland Salinity

Kings Hill-Raymond Terrace Alignment, Pacific Highway, Raymond Terrace, NSW 2324 (Part 4)



Dryland Salinity

Kings Hill-Raymond Terrace Alignment, Pacific Highway, Raymond Terrace, NSW 2324 (Part 4)

Dryland Salinity - National Assessment

Is there Dryland Salinity - National Assessment data onsite?

Yes

Is there Dryland Salinity - National Assessment data within the dataset buffer?

Yes

What Dryland Salinity assessments are given?

Assessment 2000	Assessment 2020	Assessment 2050	Distance	Direction
Delineated risk area but no high hazard or risk rating	Delineated risk area but no high hazard or risk rating	Delineated risk area but no high hazard or risk rating	0m	Onsite
High hazard or risk	High hazard or risk	High hazard or risk	0m	Onsite

Dryland Salinity Data Source : National Land and Water Resources Audit

The Commonwealth and all suppliers of source data used to derive the maps of "Australia, Forecast Areas Containing Land of High Hazard or Risk of Dryland Salinity from 2000 to 2050" do not warrant the accuracy or completeness of information in this product. Any person using or relying upon such information does so on the basis that the Commonwealth and data suppliers shall bear no responsibility or liability whatsoever for any errors, faults, defects or omissions in the information. Any persons using this information do so at their own risk.

In many cases where a high risk is indicated, less than 100% of the area will have a high hazard or risk.

Dryland Salinity Potential of Western Sydney

Dryland Salinity Potential of Western Sydney within the dataset buffer?

Feature Id	Classification	Description	Distance	Direction
N/A	Outside Data Coverage			

Dryland Salinity Potential of Western Sydney Data Source : NSW Office of Environment and Heritage

Creative Commons 3.0 © Commonwealth of Australia <http://creativecommons.org/licenses/by/3.0/au/deed.en>

Mining Subsidence Districts

Kings Hill-Raymond Terrace Alignment, Pacific Highway, Raymond Terrace, NSW 2324 (Part 4)

Mining Subsidence Districts

Mining Subsidence Districts within the dataset buffer:

District	Distance	Direction
There are no Mining Subsidence Districts within the report buffer		

Mining Subsidence District Data Source: © Land and Property Information (2016)
Creative Commons 3.0 © Commonwealth of Australia <http://creativecommons.org/licenses/by/3.0/au/deed.en>

State Environmental Planning Policy

Kings Hill-Raymond Terrace Alignment, Pacific Highway, Raymond Terrace, NSW 2324 (Part 4)

State Significant Precincts

What SEPP State Significant Precincts exist within the dataset buffer?

Map Id	Precinct	EPI Name	Published Date	Commenced Date	Currency Date	Amendment	Distance	Direction
N/A	No Records in Buffer							

State Environment Planning Policy Data Source: NSW Crown Copyright - Planning & Environment
Creative Commons 4.0 © Commonwealth of Australia <https://creativecommons.org/licenses/by/4.0/>

EPI Planning Zones

Kings Hill-Raymond Terrace Alignment, Pacific Highway, Raymond Terrace, NSW 2324 (Part 4)



Environmental Planning Instrument

Kings Hill-Raymond Terrace Alignment, Pacific Highway, Raymond Terrace, NSW 2324 (Part 4)

Land Zoning

What EPI Land Zones exist within the dataset buffer?

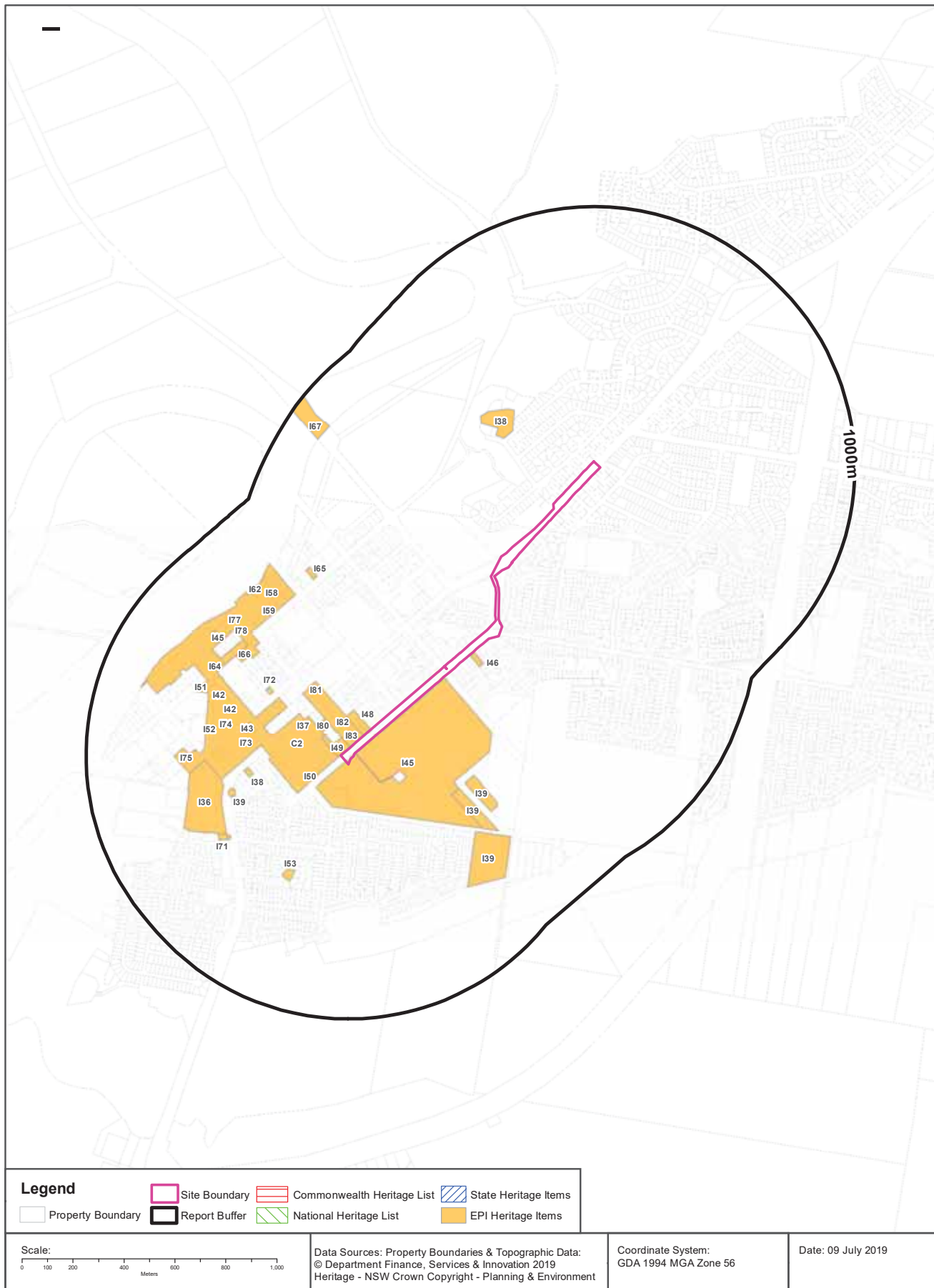
Zone	Description	Purpose	EPI Name	Published Date	Commenced Date	Currency Date	Amendment	Distance	Direction
R3	Medium Density Residential		Port Stephens Local Environmental Plan 2013	23/12/2013	24/11/2017	09/11/2018		0m	Onsite
SP2	Infrastructure	Classified Road	Port Stephens Local Environmental Plan 2013	15/06/2018	15/06/2018	09/11/2018	Amendment No 22	0m	Onsite
RE1	Public Recreation		Port Stephens Local Environmental Plan 2013	23/12/2013	24/11/2017	09/11/2018		0m	Onsite
R2	Low Density Residential		Port Stephens Local Environmental Plan 2013	23/12/2013	24/11/2017	09/11/2018		0m	Onsite
SP1	Special Activities	Hunter Water Corporation	Port Stephens Local Environmental Plan 2013	23/12/2013	24/11/2017	09/11/2018		0m	South West
R2	Low Density Residential		Port Stephens Local Environmental Plan 2013	23/12/2013	24/11/2017	09/11/2018		36m	North West
RE1	Public Recreation		Port Stephens Local Environmental Plan 2013	23/12/2013	24/11/2017	09/11/2018		61m	North East
B1	Neighbourhood Centre		Port Stephens Local Environmental Plan 2013	23/12/2013	24/11/2017	09/11/2018		122m	North East
RU2	Rural Landscape		Port Stephens Local Environmental Plan 2013	23/12/2013	24/11/2017	09/11/2018		158m	North
RE1	Public Recreation		Port Stephens Local Environmental Plan 2013	23/12/2013	24/11/2017	09/11/2018		172m	West
R2	Low Density Residential		Port Stephens Local Environmental Plan 2013	23/12/2013	24/11/2017	09/11/2018		174m	South West
SP2	Infrastructure	Depot	Port Stephens Local Environmental Plan 2013	23/12/2013	24/11/2017	09/11/2018		176m	South
B2	Local Centre		Port Stephens Local Environmental Plan 2013	23/12/2013	24/11/2017	09/11/2018		192m	North West
RE2	Private Recreation		Port Stephens Local Environmental Plan 2013	23/12/2013	24/11/2017	09/11/2018		228m	South East
B3	Commercial Core		Port Stephens Local Environmental Plan 2013	23/12/2013	24/11/2017	09/11/2018		232m	West
RE1	Public Recreation		Port Stephens Local Environmental Plan 2013	23/12/2013	24/11/2017	09/11/2018		234m	North East
IN2	Light Industrial		Port Stephens Local Environmental Plan 2013	23/12/2013	24/11/2017	09/11/2018		248m	North West
RE1	Public Recreation		Port Stephens Local Environmental Plan 2013	23/12/2013	24/11/2017	09/11/2018		258m	North East
RE1	Public Recreation		Port Stephens Local Environmental Plan 2013	23/12/2013	24/11/2017	09/11/2018		356m	East
SP2	Infrastructure	Cemetery	Port Stephens Local Environmental Plan 2013	23/12/2013	24/11/2017	09/11/2018		368m	South
RE1	Public Recreation		Port Stephens Local Environmental Plan 2013	23/12/2013	24/11/2017	09/11/2018		452m	East
R2	Low Density Residential		Port Stephens Local Environmental Plan 2013	23/12/2013	24/11/2017	09/11/2018		475m	South West
RE1	Public Recreation		Port Stephens Local Environmental Plan 2013	23/12/2013	24/11/2017	09/11/2018		479m	North West
RE1	Public Recreation		Port Stephens Local Environmental Plan 2013	23/12/2013	24/11/2017	09/11/2018		484m	North East
SP1	Special Activities	Hunter Water Corporation	Port Stephens Local Environmental Plan 2013	23/12/2013	24/11/2017	09/11/2018		512m	West
IN2	Light Industrial		Port Stephens Local Environmental Plan 2013	23/12/2013	24/11/2017	09/11/2018		514m	North East
R2	Low Density Residential		Port Stephens Local Environmental Plan 2013	17/06/2016	24/11/2017	09/11/2018	Amendment No 10	544m	South West
RE1	Public Recreation		Port Stephens Local Environmental Plan 2013	23/12/2013	24/11/2017	09/11/2018		546m	East

Zone	Description	Purpose	EPI Name	Published Date	Commenced Date	Currency Date	Amendment	Distance	Direction
RE2	Private Recreation		Port Stephens Local Environmental Plan 2013	23/12/2013	24/11/2017	09/11/2018		549m	West
RE1	Public Recreation		Port Stephens Local Environmental Plan 2013	23/12/2013	24/11/2017	09/11/2018		552m	South West
E3	Environmental Management		Port Stephens Local Environmental Plan 2013	23/12/2013	24/11/2017	09/11/2018		554m	South
RU2	Rural Landscape		Port Stephens Local Environmental Plan 2013	23/12/2013	24/11/2017	09/11/2018		562m	South West
RE1	Public Recreation		Port Stephens Local Environmental Plan 2013	23/12/2013	24/11/2017	09/11/2018		563m	East
R2	Low Density Residential		Port Stephens Local Environmental Plan 2013	23/12/2013	24/11/2017	09/11/2018		579m	West
RE1	Public Recreation		Port Stephens Local Environmental Plan 2013	23/12/2013	24/11/2017	09/11/2018		608m	North East
R5	Large Lot Residential		Port Stephens Local Environmental Plan 2013	23/12/2013	24/11/2017	09/11/2018		632m	South
SP1	Special Activities	Hunter Water Corporation	Port Stephens Local Environmental Plan 2013	23/12/2013	24/11/2017	09/11/2018		646m	North
RE1	Public Recreation		Port Stephens Local Environmental Plan 2013	23/12/2013	24/11/2017	09/11/2018		647m	North East
SP1	Special Activities	Hunter Water Corporation	Port Stephens Local Environmental Plan 2013	23/12/2013	24/11/2017	09/11/2018		648m	North East
SP1	Special Activities	Hunter Water Corporation	Port Stephens Local Environmental Plan 2013	23/12/2013	24/11/2017	09/11/2018		663m	South West
W1	Natural Waterways		Port Stephens Local Environmental Plan 2013	23/12/2013	24/11/2017	09/11/2018		666m	North
SP1	Special Activities	Hunter Water Corporation	Port Stephens Local Environmental Plan 2013	23/12/2013	24/11/2017	09/11/2018		705m	East
RE1	Public Recreation		Port Stephens Local Environmental Plan 2013	23/12/2013	24/11/2017	09/11/2018		715m	South East
RU1	Primary Production		Maitland Local Environmental Plan 2011	25/08/2017	25/08/2017	12/10/2018	Amendment No 21	716m	West
RE1	Public Recreation		Port Stephens Local Environmental Plan 2013	23/12/2013	24/11/2017	09/11/2018		717m	West
RU1	Primary Production		Port Stephens Local Environmental Plan 2013	15/06/2018	15/06/2018	09/11/2018	Amendment No 22	718m	North
SP1	Special Activities	Hunter Water Corporation	Port Stephens Local Environmental Plan 2013	23/12/2013	24/11/2017	09/11/2018		747m	South
SP1	Special Activities	Hunter Water Corporation	Port Stephens Local Environmental Plan 2013	23/12/2013	24/11/2017	09/11/2018		754m	North East
RU1	Primary Production		Port Stephens Local Environmental Plan 2013	23/12/2013	24/11/2017	09/11/2018		762m	North
SP1	Special Activities	Hunter Water Corporation	Port Stephens Local Environmental Plan 2013	23/12/2013	24/11/2017	09/11/2018		773m	South West
RE1	Public Recreation		Port Stephens Local Environmental Plan 2013	23/12/2013	24/11/2017	09/11/2018		788m	East
R2	Low Density Residential		Port Stephens Local Environmental Plan 2013	23/12/2013	24/11/2017	09/11/2018		841m	East
W1	Natural Waterways		Port Stephens Local Environmental Plan 2013	23/12/2013	24/11/2017	09/11/2018		846m	North West
W2	Recreational Waterways		Port Stephens Local Environmental Plan 2013	23/12/2013	24/11/2017	09/11/2018		846m	West
RE1	Public Recreation		Port Stephens Local Environmental Plan 2013	23/12/2013	24/11/2017	09/11/2018		889m	North East
R2	Low Density Residential		Port Stephens Local Environmental Plan 2013	23/12/2013	24/11/2017	09/11/2018		890m	East
RE1	Public Recreation		Port Stephens Local Environmental Plan 2013	23/12/2013	24/11/2017	09/11/2018		956m	East
SP1	Special Activities	Hunter Water Corporation	Port Stephens Local Environmental Plan 2013	23/12/2013	24/11/2017	09/11/2018		968m	North East
RE1	Public Recreation		Port Stephens Local Environmental Plan 2013	23/12/2013	24/11/2017	09/11/2018		973m	North

Environmental Planning Instrument Data Source: NSW Crown Copyright - Planning & Environment
Creative Commons 4.0 © Commonwealth of Australia <https://creativecommons.org/licenses/by/4.0/>

Heritage Items

Kings Hill-Raymond Terrace Alignment, Pacific Highway, Raymond Terrace, NSW 2324 (Part 4)



Heritage

Kings Hill-Raymond Terrace Alignment, Pacific Highway, Raymond Terrace, NSW 2324 (Part 4)

Commonwealth Heritage List

What are the Commonwealth Heritage List Items located within the dataset buffer?

Place Id	Name	Address	Place File No	Class	Status	Register Date	Distance	Direction
N/A	No records in buffer							

Heritage Data Source: Australian Government Department of the Environment and Energy - Heritage Branch
Creative Commons 3.0 © Commonwealth of Australia <https://creativecommons.org/licenses/by/3.0/au/deed.en>

National Heritage List

What are the National Heritage List Items located within the dataset buffer?

Note. Please click on Place Id to activate a hyperlink to online website.

Place Id	Name	Address	Place File No	Class	Status	Register Date	Distance	Direction
N/A	No records in buffer							

Heritage Data Source: Australian Government Department of the Environment and Energy - Heritage Branch
Creative Commons 3.0 © Commonwealth of Australia <https://creativecommons.org/licenses/by/3.0/au/deed.en>

State Heritage Register - Curtilages

What are the State Heritage Register Items located within the dataset buffer?

Map Id	Name	Address	LGA	Listing Date	Listing No	Plan No	Distance	Direction
N/A	No records in buffer							

Heritage Data Source: NSW Crown Copyright - Office of Environment & Heritage
Creative Commons 4.0 © Commonwealth of Australia <https://creativecommons.org/licenses/by/4.0/>

Environmental Planning Instrument - Heritage

What are the EPI Heritage Items located within the dataset buffer?

Map Id	Name	Classification	Significance	EPI Name	Published Date	Commenced Date	Currency Date	Distance	Direction
I45	'Boomerang Park', including former stone quarry and mature tree planting	Item - General	Local	Port Stephens Local Environmental Plan 2013	23/12/2013	22/02/2014	15/06/2018	0m	Onsite
I46	St Brigid's Catholic Church Group - St Brigid's Convent	Item - General	Local	Port Stephens Local Environmental Plan 2013	23/12/2013	22/02/2014	15/06/2018	0m	South

Map Id	Name	Classification	Significance	EPI Name	Published Date	Commenced Date	Currency Date	Distance	Direction
I48	'Bailiwick' (cottage)	Item - General	Local	Port Stephens Local Environmental Plan 2013	23/12/2013	22/02/2014	15/06/2018	0m	South West
I49	Raymond Terrace War Memorial	Item - General	Local	Port Stephens Local Environmental Plan 2013	23/12/2013	22/02/2014	15/06/2018	0m	South West
C2	Raymond Terrace Heritage Conservation Area	Conservation Area - General	Local	Port Stephens Local Environmental Plan 2013	23/12/2013	22/02/2014	15/06/2018	0m	West
I83	'Tom McLennan's Cottage'	Item - General	Local	Port Stephens Local Environmental Plan 2013	23/12/2013	22/02/2014	15/06/2018	0m	South West
I82	Seaham Cemetery	Item - General	Local	Port Stephens Local Environmental Plan 2013	23/12/2013	22/02/2014	15/06/2018	51m	South West
I37	Fig tree (Ficus obliqua)	Item - General	Local	Port Stephens Local Environmental Plan 2013	23/12/2013	22/02/2014	15/06/2018	102m	South West
I80	St Brigid's Catholic Church Group - St Brigid's Presbytery	Item - General	Local	Port Stephens Local Environmental Plan 2013	23/12/2013	22/02/2014	15/06/2018	118m	South West
I50	Jacaranda trees (Jacaranda mimosifolia)	Item - General	Local	Port Stephens Local Environmental Plan 2013	23/12/2013	22/02/2014	15/06/2018	133m	South West
I81	St Brigid's Catholic Church Group - St Brigid's Church	Item - General	Local	Port Stephens Local Environmental Plan 2013	23/12/2013	22/02/2014	15/06/2018	233m	South West
I38	'Roslyn', including house, outbuildings, mature trees and landscape setting	Item - General	Local	Port Stephens Local Environmental Plan 2013	23/12/2013	22/02/2014	15/06/2018	314m	North
I73	Raymond Terrace Public School, former school hall, including WWI school honour board	Item - General	Local	Port Stephens Local Environmental Plan 2013	23/12/2013	22/02/2014	15/06/2018	325m	South West
I38	'Roslyn', including house, outbuildings, mature trees and landscape setting	Item - General	Local	Port Stephens Local Environmental Plan 2013	23/12/2013	22/02/2014	15/06/2018	351m	South West
I43	'Cadell Cottage' (former doctor's house)	Item - General	Local	Port Stephens Local Environmental Plan 2013	23/12/2013	22/02/2014	15/06/2018	361m	South West
I72	'Roeth House'	Item - General	Local	Port Stephens Local Environmental Plan 2013	23/12/2013	22/02/2014	15/06/2018	365m	West
I39	Raymond Terrace Cemetery and Pioneer Hill Cemetery	Item - General	Local	Port Stephens Local Environmental Plan 2013	23/12/2013	22/02/2014	15/06/2018	368m	South
I39	Raymond Terrace Cemetery and Pioneer Hill Cemetery	Item - General	Local	Port Stephens Local Environmental Plan 2013	23/12/2013	22/02/2014	15/06/2018	436m	South West
I74	Part of St John's Anglican Church Group	Item - General	Local	Port Stephens Local Environmental Plan 2013	23/12/2013	22/02/2014	15/06/2018	447m	South West
I42	Sandstone block timber clad house	Item - General	Local	Port Stephens Local Environmental Plan 2013	23/12/2013	22/02/2014	15/06/2018	453m	West
I53	King Street Group - shop and former boot and shoe emporium	Item - General	Local	Port Stephens Local Environmental Plan 2013	23/12/2013	22/02/2014	15/06/2018	467m	South West
I36	'Woodlands' (timber cottage)	Item - General	Local	Port Stephens Local Environmental Plan 2013	23/12/2013	22/02/2014	15/06/2018	475m	South West
I42	Sandstone block timber clad house	Item - General	Local	Port Stephens Local Environmental Plan 2013	23/12/2013	22/02/2014	15/06/2018	509m	West

Map Id	Name	Classification	Significance	EPI Name	Published Date	Commenced Date	Currency Date	Distance	Direction
I52	King Street Group, residence and former hotel	Item - General	Local	Port Stephens Local Environmental Plan 2013	23/12/2013	22/02/2014	15/06/2018	517m	West
I66	'Mayo's Building'	Item - General	Local	Port Stephens Local Environmental Plan 2013	23/12/2013	22/02/2014	15/06/2018	531m	West
I67	Fitzgerald Bridge over Hunter River	Item - General	Local	Port Stephens Local Environmental Plan 2013	23/12/2013	22/02/2014	15/06/2018	534m	West
I71	St John's Anglican Church group - rectory and Norfolk Island Pine trees (Araucaria heterophylla)	Item - General	Local	Port Stephens Local Environmental Plan 2013	23/12/2013	22/02/2014	15/06/2018	536m	South West
I39	Raymond Terrace Cemetery and Pioneer Hill Cemetery	Item - General	Local	Port Stephens Local Environmental Plan 2013	23/12/2013	22/02/2014	15/06/2018	538m	South
I79	Courthouse	Item - General	Local	Port Stephens Local Environmental Plan 2013	23/12/2013	22/02/2014	15/06/2018	542m	West
I71	St John's Anglican Church group - rectory and Norfolk Island Pine trees (Araucaria heterophylla)	Item - General	Local	Port Stephens Local Environmental Plan 2013	23/12/2013	22/02/2014	15/06/2018	544m	South West
I75	Junction Inn	Item - General	Local	Port Stephens Local Environmental Plan 2013	23/12/2013	22/02/2014	15/06/2018	554m	South West
I64	Former post office	Item - General	Local	Port Stephens Local Environmental Plan 2013	23/12/2013	22/02/2014	15/06/2018	566m	West
I51	'Kia-ora', including mulberry tree beside driveway	Item - General	Local	Port Stephens Local Environmental Plan 2013	23/12/2013	22/02/2014	15/06/2018	576m	West
I65	Former schoolhouse	Item - General	Local	Port Stephens Local Environmental Plan 2013	23/12/2013	22/02/2014	15/06/2018	596m	West
I59	King Street Group, former drapery shop	Item - General	Local	Port Stephens Local Environmental Plan 2013	23/12/2013	22/02/2014	15/06/2018	596m	West
I55	King Street Group - shop and former grocery store	Item - General	Local	Port Stephens Local Environmental Plan 2013	23/12/2013	22/02/2014	15/06/2018	596m	West
I56	King Street Group, hall, former shop and residence	Item - General	Local	Port Stephens Local Environmental Plan 2013	23/12/2013	22/02/2014	15/06/2018	596m	West
I57	King Street Group, former Princess Café, including leaded glass highlights over front door and wind*	Item - General	Local	Port Stephens Local Environmental Plan 2013	23/12/2013	22/02/2014	15/06/2018	596m	West
I68	Sketchley Cottage and Port Jackson Fig tree (Ficus rubiginosa)	Item - General	Local	Port Stephens Local Environmental Plan 2013	23/12/2013	22/02/2014	15/06/2018	596m	West
I78	Uniting Church, including bell tower and WWI honour board	Item - General	Local	Port Stephens Local Environmental Plan 2013	23/12/2013	22/02/2014	15/06/2018	618m	West
I63	Timber cottage	Item - General	Local	Port Stephens Local Environmental Plan 2013	23/12/2013	22/02/2014	15/06/2018	618m	West
I61	King Street Group, former shop and residence	Item - General	Local	Port Stephens Local Environmental Plan 2013	23/12/2013	22/02/2014	15/06/2018	618m	West
I54	King Street Group, residence and former hardware store	Item - General	Local	Port Stephens Local Environmental Plan 2013	23/12/2013	22/02/2014	15/06/2018	619m	West

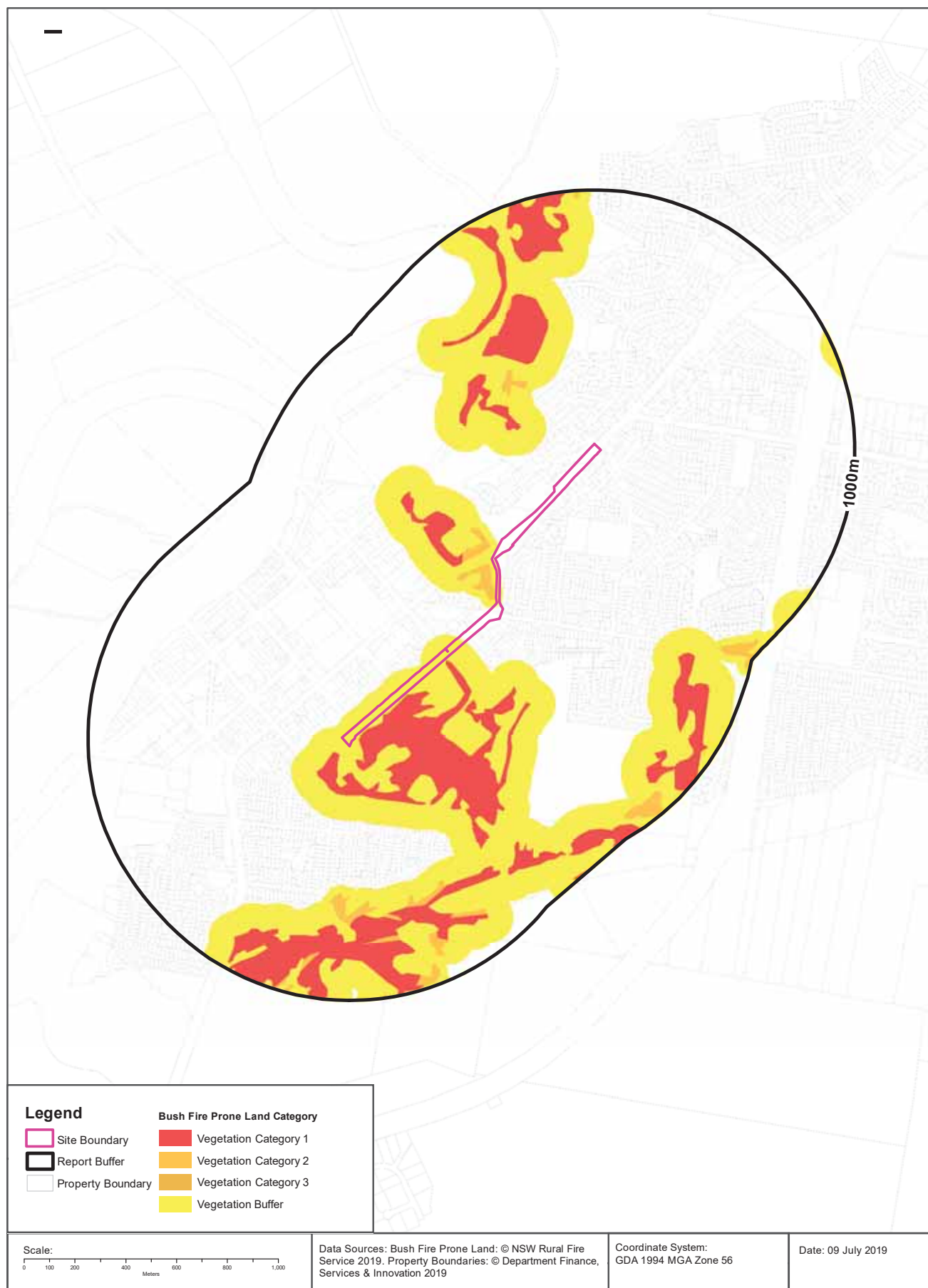
Map Id	Name	Classification	Significance	EPI Name	Published Date	Commenced Date	Currency Date	Distance	Direction
I77	National Australia Bank	Item - General	Local	Port Stephens Local Environmental Plan 2013	23/12/2013	22/02/2014	15/06/2018	637m	West
I45	'Boomerang Park', including former stone quarry and mature tree planting	Item - General	Local	Port Stephens Local Environmental Plan 2013	23/12/2013	22/02/2014	15/06/2018	648m	West
I60	King Street Group, brick warehouse and former Richardson and Scully store	Item - General	Local	Port Stephens Local Environmental Plan 2013	23/12/2013	22/02/2014	15/06/2018	655m	West
I44	Timber cottage (former mounted police barracks)	Item - General	Local	Port Stephens Local Environmental Plan 2013	23/12/2013	22/02/2014	15/06/2018	658m	West
I62	Canary Island Date Palm (Phoenix canariensis)	Item - General	Local	Port Stephens Local Environmental Plan 2013	23/12/2013	22/02/2014	15/06/2018	661m	West
I58	Moreton Bay Fig trees (Ficus macrophylla 'The Marriage Trees')	Item - General	Local	Port Stephens Local Environmental Plan 2013	23/12/2013	22/02/2014	15/06/2018	662m	West
I67	Fitzgerald Bridge over Hunter River	Item - General	Local	Port Stephens Local Environmental Plan 2013	23/12/2013	22/02/2014	15/06/2018	847m	North West

Heritage Data Source: NSW Crown Copyright - Planning & Environment

Creative Commons 4.0 © Commonwealth of Australia <https://creativecommons.org/licenses/by/4.0/>

Natural Hazards - Bush Fire Prone Land

Kings Hill-Raymond Terrace Alignment, Pacific Highway, Raymond Terrace, NSW 2324 (Part 4)



Natural Hazards

Kings Hill-Raymond Terrace Alignment, Pacific Highway, Raymond Terrace, NSW 2324 (Part 4)

Bush Fire Prone Land

What are the nearest Bush Fire Prone Land Categories that exist within the dataset buffer?

Bush Fire Prone Land Category	Distance	Direction
Vegetation Buffer	0m	Onsite
Vegetation Category 1	3m	South
Vegetation Category 2	7m	North

NSW Bush Fire Prone Land - © NSW Rural Fire Service under Creative Commons 4.0 International Licence

Ecological Constraints - Vegetation & Ramsar Wetlands

Kings Hill-Raymond Terrace Alignment, Pacific Highway, Raymond Terrace, NSW 2324 (Part 4)



Ecological Constraints

Kings Hill-Raymond Terrace Alignment, Pacific Highway, Raymond Terrace, NSW 2324 (Part 4)

Lower Hunter and Central Coast Regional Vegetation Survey

What vegetation from the Lower Hunter and Central Coast Regional Survey exists within the dataset buffer?

Map Id	Unit Desc	Canopy Code	Canopy Cover	Species	Distance	Direction
17	Lower Hunter Spotted Gum - Ironbark Forest	OF	Mid Dense (Open Forest) 50- <100% cover	C. maculata / E. fibrosa / E. punctata	0m	Onsite
33	Coastal Sand Apple - Blackbutt orest	WO	Sparse (Woodland) 20-<50% cover	A. costata / E. pilularis / Banksia serrata	4m	South
19	Hunter Lowland Redgum Forest	WO	Sparse (Woodland) 20-<50% cover	E. tereticornis / E. punctata / E. crebra / A. floribunda / C. maculata	5m	South
17	Lower Hunter Spotted Gum - Ironbark Forest	WO	Sparse (Woodland) 20-<50% cover	C. maculata / E. fibrosa / E. punctata	11m	South
37	Swamp Mahogany - Paperbark Forest	OF	Mid Dense (Open Forest) 50- <100% cover	Melaleuca quinquenervia / E. robusta / C. glauca	25m	North
40	Swamp Oak Rushland Forest	OF	Mid Dense (Open Forest) 50- <100% cover	C. glauca / Melaleuca ericifolia / Baumea juncea	110m	North West
37	Swamp Mahogany - Paperbark Forest	WO	Sparse (Woodland) 20-<50% cover	Melaleuca quinquenervia / E. robusta / C. glauca	348m	South
17	Lower Hunter Spotted Gum - Ironbark Forest	W	Wetland	C. maculata / E. fibrosa / E. punctata	403m	North
37	Swamp Mahogany - Paperbark Forest	W	Wetland	Melaleuca quinquenervia / E. robusta / C. glauca	413m	North
19	Hunter Lowland Redgum Forest	OF	Mid Dense (Open Forest) 50- <100% cover	E. tereticornis / E. punctata / E. crebra / A. floribunda / C. maculata	495m	North
40	Swamp Oak Rushland Forest	W	Wetland	C. glauca / Melaleuca ericifolia / Baumea juncea	624m	North
40	Swamp Oak Rushland Forest	WO	Sparse (Woodland) 20-<50% cover	C. glauca / Melaleuca ericifolia / Baumea juncea	627m	North
13	Central Hunter Riparian Forest	OF	Mid Dense (Open Forest) 50- <100% cover	E. tereticornis / C. glauca / A. floribunda	656m	South West
33	Coastal Sand Apple - Blackbutt orest	OF	Mid Dense (Open Forest) 50- <100% cover	A. costata / E. pilularis / Banksia serrata	724m	South East
46	Freshwater Wetland Complex	WO	Sparse (Woodland) 20-<50% cover	Ludwigia peploides subsp montevidensis / Paspalum distichum / Eleocharis sphacelata / Juncus usitatus	760m	North
34	Coastal Sand Wallum Woodland - Heath	OF	Mid Dense (Open Forest) 50- <100% cover	Banksia aemula / C. gummifera / A. costata	762m	South

Lower Hunter and Central Coast Regional Vegetation Survey: NSW Office of Environment and Heritage

Ramsar Wetlands

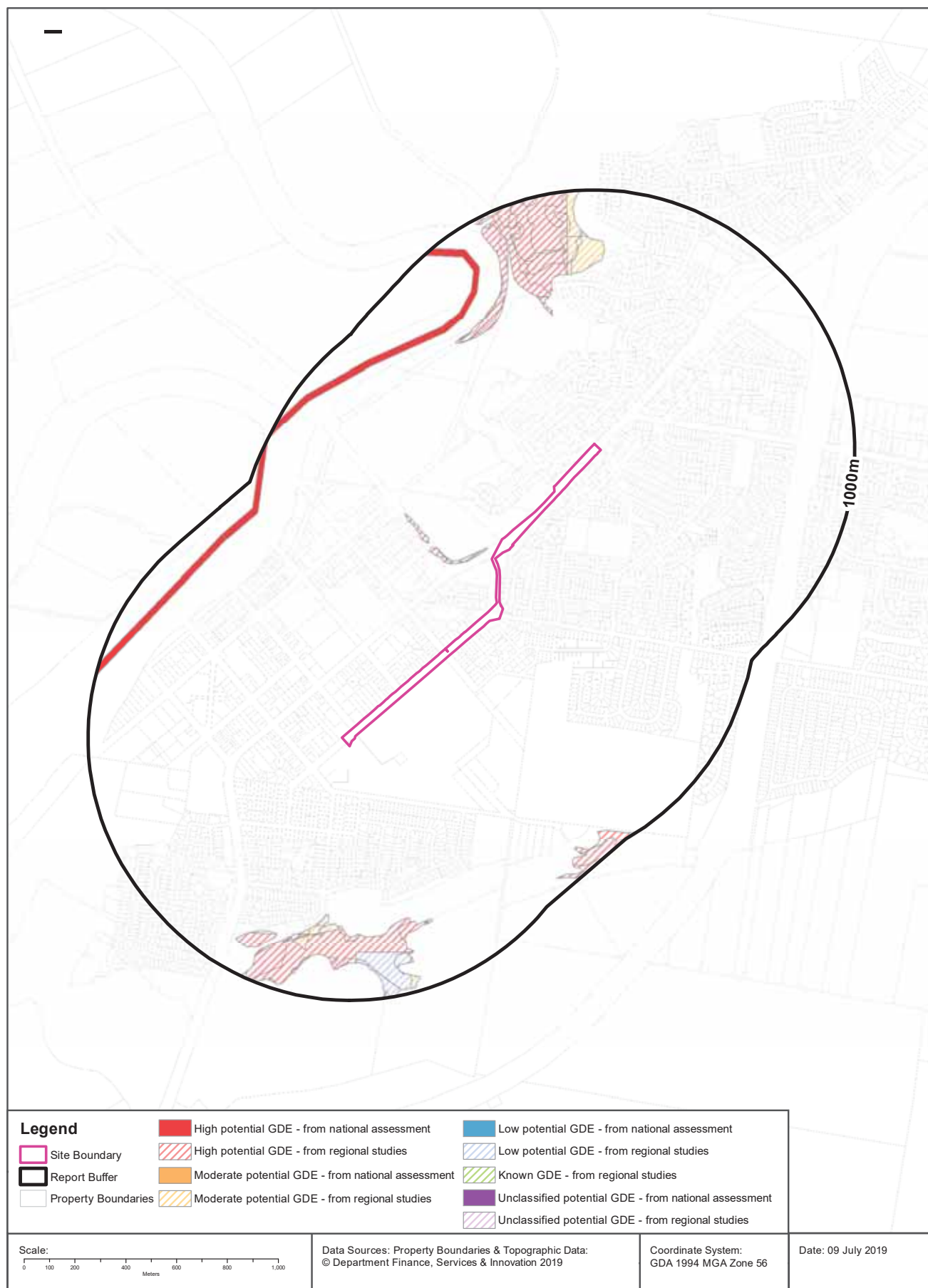
What Ramsar Wetland areas exist within the dataset buffer?

Map Id	Ramsar Name	Wetland Name	Designation Date	Source	Distance	Direction
N/A	No records in buffer					

Ramsar Wetlands Data Source: © Commonwealth of Australia - Department of Environment

Ecological Constraints - Groundwater Dependent Ecosystems Atlas

Kings Hill-Raymond Terrace Alignment, Pacific Highway, Raymond Terrace, NSW 2324 (Part 4)



Ecological Constraints

Kings Hill-Raymond Terrace Alignment, Pacific Highway, Raymond Terrace, NSW 2324 (Part 4)

Groundwater Dependent Ecosystems Atlas

Type	GDE Potential	Geomorphology	Ecosystem Type	Aquifer Geology	Distance
Terrestrial	Low potential GDE - from regional studies	Undulating to low hilly country on weak rocks, with alluvial and sandy littoral plains.	Vegetation		35m
Terrestrial	High potential GDE - from regional studies	Undulating to low hilly country on weak rocks, with alluvial and sandy littoral plains.	Vegetation		118m
Terrestrial	Moderate potential GDE - from regional studies	Plateau flank dissected into narrow strike ridges and valleys.	Vegetation		665m
Aquatic	High potential GDE - from national assessment	Undulating to low hilly country on weak rocks, with alluvial and sandy littoral plains.	River		717m

Groundwater Dependent Ecosystems Atlas Data Source: The Bureau of Meteorology

Creative Commons 3.0 © Commonwealth of Australia <http://creativecommons.org/licenses/by/3.0/au/deed.en>

Ecological Constraints - Inflow Dependent Ecosystems Likelihood

Kings Hill-Raymond Terrace Alignment, Pacific Highway, Raymond Terrace, NSW 2324 (Part 4)



Ecological Constraints

Kings Hill-Raymond Terrace Alignment, Pacific Highway, Raymond Terrace, NSW 2324 (Part 4)

Inflow Dependent Ecosystems Likelihood

Type	IDE Likelihood	Geomorphology	Ecosystem Type	Aquifer Geology	Distance
Terrestrial	6	Undulating to low hilly country on weak rocks, with alluvial and sandy littoral plains.	Vegetation		35m
Terrestrial	10	Undulating to low hilly country on weak rocks, with alluvial and sandy littoral plains.	Vegetation		47m
Terrestrial	8	Undulating to low hilly country on weak rocks, with alluvial and sandy littoral plains.	Vegetation		118m
Terrestrial	5	Plateau flank dissected into narrow strike ridges and valleys.	Vegetation		532m
Terrestrial	3	Undulating to low hilly country on weak rocks, with alluvial and sandy littoral plains.	Vegetation		606m
Terrestrial	7	Dissected basaltic plateaus.	Vegetation		610m
Terrestrial	4	Undulating to low hilly country on weak rocks, with alluvial and sandy littoral plains.	Vegetation		673m
Aquatic	10	Undulating to low hilly country on weak rocks, with alluvial and sandy littoral plains.	River		717m
Terrestrial	2	Undulating to low hilly country on weak rocks, with alluvial and sandy littoral plains.	Vegetation		982m

Inflow Dependent Ecosystems Likelihood Data Source: The Bureau of Meteorology
Creative Commons 3.0 © Commonwealth of Australia <http://creativecommons.org/licenses/by/3.0/au/deed.en>

Ecological Constraints

Kings Hill-Raymond Terrace Alignment, Pacific Highway, Raymond Terrace, NSW 2324 (Part 4)

NSW BioNet Atlas

Species on the NSW BioNet Atlas that have a NSW or federal conservation status, a NSW sensitivity status, or are listed under a migratory species agreement, and are within 10km of the site?

Kingdom	Class	Scientific	Common	NSW Conservation Status	NSW Sensitivity Class	Federal Conservation Status	Migratory Species Agreements
Animalia	Amphibia	Crinia tinnula	Wallum Froglet	Vulnerable	Not Sensitive	Not Listed	
Animalia	Amphibia	Litoria aurea	Green and Golden Bell Frog	Endangered	Not Sensitive	Vulnerable	
Animalia	Amphibia	Uperoleia mahonyi	Mahony's Toadlet	Endangered	Not Sensitive	Not Listed	
Animalia	Aves	Actitis hypoleucos	Common Sandpiper	Not Listed	Not Sensitive	Not Listed	ROKAMBA;CAMBA; JAMBA
Animalia	Aves	Anseranas semipalmata	Magpie Goose	Vulnerable	Not Sensitive	Not Listed	
Animalia	Aves	Anthochaera phrygia	Regent Honeyeater	Critically Endangered	Not Sensitive	Critically Endangered	
Animalia	Aves	Ardea ibis	Cattle Egret	Not Listed	Not Sensitive	Not Listed	CAMBA;JAMBA
Animalia	Aves	Ardenna pacificus	Wedge-tailed Shearwater	Not Listed	Not Sensitive	Not Listed	JAMBA
Animalia	Aves	Artamus cyanopterus cyanopterus	Dusky Woodswallow	Vulnerable	Not Sensitive	Not Listed	
Animalia	Aves	Botaurus poiciloptilus	Australasian Bittern	Endangered	Not Sensitive	Endangered	
Animalia	Aves	Calidris acuminata	Sharp-tailed Sandpiper	Not Listed	Not Sensitive	Not Listed	ROKAMBA;CAMBA; JAMBA
Animalia	Aves	Calidris canutus	Red Knot	Not Listed	Not Sensitive	Endangered	ROKAMBA;CAMBA; JAMBA
Animalia	Aves	Calidris ferruginea	Curlew Sandpiper	Endangered	Not Sensitive	Critically Endangered	ROKAMBA;CAMBA; JAMBA
Animalia	Aves	Calidris melanotos	Pectoral Sandpiper	Not Listed	Not Sensitive	Not Listed	ROKAMBA;JAMBA
Animalia	Aves	Calidris minuta	Little Stint	Not Listed	Not Sensitive	Not Listed	ROKAMBA
Animalia	Aves	Calidris ruficollis	Red-necked Stint	Not Listed	Not Sensitive	Not Listed	ROKAMBA;CAMBA; JAMBA
Animalia	Aves	Calidris tenuirostris	Great Knot	Vulnerable	Not Sensitive	Critically Endangered	ROKAMBA;CAMBA; JAMBA
Animalia	Aves	Calyptorhynchus lathamii	Glossy Black-Cockatoo	Vulnerable	Category 2	Not Listed	
Animalia	Aves	Charadrius leschenaultii	Greater Sand-plover	Vulnerable	Not Sensitive	Vulnerable	ROKAMBA;CAMBA; JAMBA
Animalia	Aves	Charadrius mongolus	Lesser Sand-plover	Vulnerable	Not Sensitive	Endangered	ROKAMBA;CAMBA; JAMBA
Animalia	Aves	Chlidonias leucopterus	White-winged Black Tern	Not Listed	Not Sensitive	Not Listed	ROKAMBA;CAMBA; JAMBA
Animalia	Aves	Circus assimilis	Spotted Harrier	Vulnerable	Not Sensitive	Not Listed	
Animalia	Aves	Climacteris picumnus victoriae	Brown Treecreeper (eastern subspecies)	Vulnerable	Not Sensitive	Not Listed	
Animalia	Aves	Daphoenositta chrysoptera	Varied Sittella	Vulnerable	Not Sensitive	Not Listed	
Animalia	Aves	Dromaius novaehollandiae	Emu	Endangered Population	Not Sensitive	Not Listed	
Animalia	Aves	Ephippiorhynchus asiaticus	Black-necked Stork	Endangered	Not Sensitive	Not Listed	

Kingdom	Class	Scientific	Common	NSW Conservation Status	NSW Sensitivity Class	Federal Conservation Status	Migratory Species Agreements
Animalia	Aves	<i>Epthianura albifrons</i>	White-fronted Chat	Vulnerable	Not Sensitive	Not Listed	
Animalia	Aves	<i>Falco subniger</i>	Black Falcon	Vulnerable	Not Sensitive	Not Listed	
Animalia	Aves	<i>Gallinago hardwickii</i>	Latham's Snipe	Not Listed	Not Sensitive	Not Listed	ROKAMBA;CAMBA; JAMBA
Animalia	Aves	<i>Gelochelidon nilotica</i>	Gull-billed Tern	Not Listed	Not Sensitive	Not Listed	CAMBA
Animalia	Aves	<i>Glossopsitta pusilla</i>	Little Lorikeet	Vulnerable	Not Sensitive	Not Listed	
Animalia	Aves	<i>Haematopus longirostris</i>	Pied Oystercatcher	Endangered	Not Sensitive	Not Listed	
Animalia	Aves	<i>Haliaeetus leucogaster</i>	White-bellied Sea-Eagle	Vulnerable	Not Sensitive	Not Listed	CAMBA
Animalia	Aves	<i>Hamirostra melanosternon</i>	Black-breasted Buzzard	Vulnerable	Category 3	Not Listed	
Animalia	Aves	<i>Hieraaetus morphnoides</i>	Little Eagle	Vulnerable	Not Sensitive	Not Listed	
Animalia	Aves	<i>Hirundapus caudacutus</i>	White-throated Needletail	Not Listed	Not Sensitive	Not Listed	ROKAMBA;CAMBA; JAMBA
Animalia	Aves	<i>Hirundo rustica</i>	Barn Swallow	Not Listed	Not Sensitive	Not Listed	ROKAMBA;CAMBA; JAMBA
Animalia	Aves	<i>Hydroprogne caspia</i>	Caspian Tern	Not Listed	Not Sensitive	Not Listed	CAMBA;JAMBA
Animalia	Aves	<i>Irediparra gallinacea</i>	Comb-crested Jacana	Vulnerable	Not Sensitive	Not Listed	
Animalia	Aves	<i>Ixobrychus flavicollis</i>	Black Bittern	Vulnerable	Not Sensitive	Not Listed	
Animalia	Aves	<i>Lathamus discolor</i>	Swift Parrot	Endangered	Category 3	Critically Endangered	
Animalia	Aves	<i>Limicola falcinellus</i>	Broad-billed Sandpiper	Vulnerable	Not Sensitive	Not Listed	ROKAMBA;CAMBA; JAMBA
Animalia	Aves	<i>Limosa lapponica</i>	Bar-tailed Godwit	Not Listed	Not Sensitive	Not Listed	ROKAMBA;CAMBA; JAMBA
Animalia	Aves	<i>Limosa limosa</i>	Black-tailed Godwit	Vulnerable	Not Sensitive	Not Listed	ROKAMBA;CAMBA; JAMBA
Animalia	Aves	<i>Lophochroa leadbeateri</i>	Major Mitchell's Cockatoo	Vulnerable	Category 2	Not Listed	
Animalia	Aves	<i>Lophoictinia isura</i>	Square-tailed Kite	Vulnerable	Category 3	Not Listed	
Animalia	Aves	<i>Merops ornatus</i>	Rainbow Bee-eater	Not Listed	Not Sensitive	Not Listed	JAMBA
Animalia	Aves	<i>Neophema pulchella</i>	Turquoise Parrot	Vulnerable	Category 3	Not Listed	
Animalia	Aves	<i>Ninox strenua</i>	Powerful Owl	Vulnerable	Category 3	Not Listed	
Animalia	Aves	<i>Numenius madagascariensis</i>	Eastern Curlew	Not Listed	Not Sensitive	Critically Endangered	ROKAMBA;CAMBA; JAMBA
Animalia	Aves	<i>Numenius minutus</i>	Little Curlew	Not Listed	Not Sensitive	Not Listed	ROKAMBA;CAMBA; JAMBA
Animalia	Aves	<i>Numenius phaeopus</i>	Whimbrel	Not Listed	Not Sensitive	Not Listed	ROKAMBA;CAMBA; JAMBA
Animalia	Aves	<i>Oxyura australis</i>	Blue-billed Duck	Vulnerable	Not Sensitive	Not Listed	
Animalia	Aves	<i>Pandion cristatus</i>	Eastern Osprey	Vulnerable	Category 3	Not Listed	
Animalia	Aves	<i>Petroica boodang</i>	Scarlet Robin	Vulnerable	Not Sensitive	Not Listed	
Animalia	Aves	<i>Philomachus pugnax</i>	Ruff	Not Listed	Not Sensitive	Not Listed	ROKAMBA;CAMBA; JAMBA
Animalia	Aves	<i>Plegadis falcinellus</i>	Glossy Ibis	Not Listed	Not Sensitive	Not Listed	CAMBA
Animalia	Aves	<i>Pluvialis fulva</i>	Pacific Golden Plover	Not Listed	Not Sensitive	Not Listed	ROKAMBA;CAMBA; JAMBA
Animalia	Aves	<i>Pluvialis squatarola</i>	Grey Plover	Not Listed	Not Sensitive	Not Listed	ROKAMBA;CAMBA; JAMBA
Animalia	Aves	<i>Pomatostomus temporalis</i>	Grey-crowned Babbler (eastern subspecies)	Vulnerable	Not Sensitive	Not Listed	

Kingdom	Class	Scientific	Common	NSW Conservation Status	NSW Sensitivity Class	Federal Conservation Status	Migratory Species Agreements
Animalia	Aves	<i>Ptilinopus magnificus</i>	Wompoo Fruit-Dove	Vulnerable	Not Sensitive	Not Listed	
Animalia	Aves	<i>Ptilinopus regina</i>	Rose-crowned Fruit-Dove	Vulnerable	Not Sensitive	Not Listed	
Animalia	Aves	<i>Ptilinopus superbus</i>	Superb Fruit-Dove	Vulnerable	Not Sensitive	Not Listed	
Animalia	Aves	<i>Rhipidura fuliginosa</i>	New Zealand Fantail (Lord Howe Is. subsp.)	Presumed Extinct	Not Sensitive	Extinct	
Animalia	Aves	<i>Rostratula australis</i>	Australian Painted Snipe	Endangered	Not Sensitive	Endangered	
Animalia	Aves	<i>Sternula albifrons</i>	Little Tern	Endangered	Not Sensitive	Not Listed	ROKAMBA;CAMBA; JAMBA
Animalia	Aves	<i>Stictonetta naevosa</i>	Freckled Duck	Vulnerable	Not Sensitive	Not Listed	
Animalia	Aves	<i>Tringa brevipes</i>	Grey-tailed Tattler	Not Listed	Not Sensitive	Not Listed	ROKAMBA;CAMBA; JAMBA
Animalia	Aves	<i>Tringa glareola</i>	Wood Sandpiper	Not Listed	Not Sensitive	Not Listed	ROKAMBA;CAMBA; JAMBA
Animalia	Aves	<i>Tringa incana</i>	Wandering Tattler	Not Listed	Not Sensitive	Not Listed	JAMBA
Animalia	Aves	<i>Tringa nebularia</i>	Common Greenshank	Not Listed	Not Sensitive	Not Listed	ROKAMBA;CAMBA; JAMBA
Animalia	Aves	<i>Tringa stagnatilis</i>	Marsh Sandpiper	Not Listed	Not Sensitive	Not Listed	ROKAMBA;CAMBA; JAMBA
Animalia	Aves	<i>Tryngites subruficollis</i>	Buff-breasted Sandpiper	Not Listed	Not Sensitive	Not Listed	ROKAMBA;JAMBA
Animalia	Aves	<i>Tyto longimembris</i>	Eastern Grass Owl	Vulnerable	Category 3	Not Listed	
Animalia	Aves	<i>Tyto novaehollandiae</i>	Masked Owl	Vulnerable	Category 3	Not Listed	
Animalia	Aves	<i>Xenus cinereus</i>	Terek Sandpiper	Vulnerable	Not Sensitive	Not Listed	ROKAMBA;CAMBA; JAMBA
Animalia	Mammalia	<i>Arctocephalus forsteri</i>	New Zealand Fur-seal	Vulnerable	Not Sensitive	Not Listed	
Animalia	Mammalia	<i>Cercartetus nanus</i>	Eastern Pygmy-possum	Vulnerable	Not Sensitive	Not Listed	
Animalia	Mammalia	<i>Chalinolobus dwyeri</i>	Large-eared Pied Bat	Vulnerable	Not Sensitive	Vulnerable	
Animalia	Mammalia	<i>Dasyurus maculatus</i>	Spotted-tailed Quoll	Vulnerable	Not Sensitive	Endangered	
Animalia	Mammalia	<i>Falsistrellus tasmaniensis</i>	Eastern False Pipistrelle	Vulnerable	Not Sensitive	Not Listed	
Animalia	Mammalia	<i>Miniopterus australis</i>	Little Bentwing-bat	Vulnerable	Not Sensitive	Not Listed	
Animalia	Mammalia	<i>Miniopterus schreibersii oceanensis</i>	Eastern Bentwing-bat	Vulnerable	Not Sensitive	Not Listed	
Animalia	Mammalia	<i>Mormopterus norfolkensis</i>	Eastern Freetail-bat	Vulnerable	Not Sensitive	Not Listed	
Animalia	Mammalia	<i>Myotis macropus</i>	Southern Myotis	Vulnerable	Not Sensitive	Not Listed	
Animalia	Mammalia	<i>Nyctophilus corbeni</i>	Corben's Long-eared Bat	Vulnerable	Not Sensitive	Vulnerable	
Animalia	Mammalia	<i>Petaurus australis</i>	Yellow-bellied Glider	Vulnerable	Not Sensitive	Not Listed	
Animalia	Mammalia	<i>Petaurus norfolkensis</i>	Squirrel Glider	Vulnerable	Not Sensitive	Not Listed	
Animalia	Mammalia	<i>Phascogale tapoatafa</i>	Brush-tailed Phascogale	Vulnerable	Not Sensitive	Not Listed	
Animalia	Mammalia	<i>Phascogale cinereus</i>	Koala	Vulnerable	Not Sensitive	Vulnerable	
Animalia	Mammalia	<i>Potorous tridactylus</i>	Long-nosed Potoroo	Vulnerable	Not Sensitive	Vulnerable	
Animalia	Mammalia	<i>Pseudomys novaehollandiae</i>	New Holland Mouse	Not Listed	Not Sensitive	Vulnerable	
Animalia	Mammalia	<i>Pteropus poliocephalus</i>	Grey-headed Flying-fox	Vulnerable	Not Sensitive	Vulnerable	

Kingdom	Class	Scientific	Common	NSW Conservation Status	NSW Sensitivity Class	Federal Conservation Status	Migratory Species Agreements
Animalia	Mammalia	Saccolaimus flaviventris	Yellow-bellied Sheath-tail-bat	Vulnerable	Not Sensitive	Not Listed	
Animalia	Mammalia	Scoteanax rueppellii	Greater Broad-nosed Bat	Vulnerable	Not Sensitive	Not Listed	
Animalia	Mammalia	Vespadelus troungtoni	Eastern Cave Bat	Vulnerable	Not Sensitive	Not Listed	
Plantae	Flora	Asperula asthenes	Trailing Woodruff	Vulnerable	Not Sensitive	Vulnerable	
Plantae	Flora	Callistemon linearifolius	Netted Bottle Brush	Vulnerable	Category 3	Not Listed	
Plantae	Flora	Cheilanthes sieberi subsp. pseudovellea		Endangered	Category 3	Not Listed	
Plantae	Flora	Commersonia prostrata	Dwarf Kerrawang	Endangered	Not Sensitive	Endangered	
Plantae	Flora	Cynanchum elegans	White-flowered Wax Plant	Endangered	Not Sensitive	Endangered	
Plantae	Flora	Diuris arenaria	Sand Doubletail	Endangered	Category 2	Not Listed	
Plantae	Flora	Eucalyptus camfieldii	Camfield's Stringybark	Vulnerable	Not Sensitive	Vulnerable	
Plantae	Flora	Eucalyptus parramattensis subsp. decadens		Vulnerable	Not Sensitive	Vulnerable	
Plantae	Flora	Euphrasia arguta		Critically Endangered	Not Sensitive	Critically Endangered	
Plantae	Flora	Grevillea parviflora subsp. parviflora	Small-flower Grevillea	Vulnerable	Not Sensitive	Vulnerable	
Plantae	Flora	Isotoma fluviatilis subsp. fluviatilis		Not Listed	Not Sensitive	Extinct	
Plantae	Flora	Lindernia alsinoides	Noah's False Chickweed	Endangered	Not Sensitive	Not Listed	
Plantae	Flora	Maundia triglochoides		Vulnerable	Not Sensitive	Not Listed	
Plantae	Flora	Persicaria elatior	Tall Knotweed	Vulnerable	Not Sensitive	Vulnerable	
Plantae	Flora	Pterostylis chaetophora		Vulnerable	Category 2	Not Listed	
Plantae	Flora	Rhodamnia rubescens	Scrub Turpentine	Critically Endangered	Not Sensitive	Not Listed	
Plantae	Flora	Zannichellia palustris		Endangered	Not Sensitive	Not Listed	

Data does not include NSW category 1 sensitive species.

NSW BioNet: © State of NSW and Office of Environment and Heritage

Data obtained 09/07/2019

USE OF REPORT - APPLICABLE TERMS

The following terms apply to any person (End User) who is given the Report by the person who purchased the Report from Lotsearch Pty Ltd (ABN: 89 600 168 018) (Lotsearch) or who otherwise has access to the Report (Terms). The contract terms that apply between Lotsearch and the purchaser of the Report are specified in the order form pursuant to which the Report was ordered and the terms set out below are of no effect as between Lotsearch and the purchaser of the Report.

1. End User acknowledges and agrees that:
 - (a) the Report is compiled from or using content (**Third Party Content**) which is comprised of:
 - (i) content provided to Lotsearch by third party content suppliers with whom Lotsearch has contractual arrangements or content which is freely available or methodologies licensed to Lotsearch by third parties with whom Lotsearch has contractual arrangements (**Third Party Content Suppliers**); and
 - (ii) content which is derived from content described in paragraph (i);
 - (b) Neither Lotsearch nor Third Party Content Suppliers takes any responsibility for or give any warranty in relation to the accuracy or completeness of any Third Party Content included in the Report including any contaminated land assessment or other assessment included as part of a Report;
 - (c) the Third Party Content Suppliers do not constitute an exhaustive set of all repositories or sources of information available in relation to the property which is the subject of the Report (**Property**) and accordingly neither Lotsearch nor Third Party Content Suppliers gives any warranty in relation to the accuracy or completeness of the Third Party Content incorporated into the report including any contaminated land assessment or other assessment included as part of a Report;
 - (d) Reports are generated at a point in time (as specified by the date/time stamp appearing on the Report) and accordingly the Report is based on the information available at that point in time and Lotsearch is not obliged to undertake any additional reporting to take into consideration any information that may become available between the point in time specified by the date/time stamp and the date on which the Report was provided by Lotsearch to the purchaser of the Report;
 - (e) Reports must be used or reproduced in their entirety and End User must not reproduce or make available to other persons only parts of the Report;
 - (f) Lotsearch has not undertaken any physical inspection of the property;
 - (g) neither Lotsearch nor Third Party Content Suppliers warrants that all land uses or features whether past or current are identified in the Report;
 - (h) the Report does not include any information relating to the actual state or condition of the Property;
 - (i) the Report should not be used or taken to indicate or exclude actual fitness or unfitness of Land or Property for any particular purpose
 - (j) the Report should not be relied upon for determining saleability or value or making any other decisions in relation to the Property and in particular should not be taken to be a rating or assessment of the desirability or market value of the property or its features; and
 - (k) the End User should undertake its own inspections of the Land or Property to satisfy itself that there are no defects or failures
2. The End User may not make the Report or any copies or extracts of the report or any part of it available to any other person. If End User wishes to provide the Report to any other person or make extracts or copies of the Report, it must contact the purchaser of the Report before doing so to ensure the proposed use is consistent with the contract terms between Lotsearch and the purchaser.
3. Neither Lotsearch (nor any of its officers, employees or agents) nor any of its Third Party Content Suppliers will have any liability to End User or any person to whom End User provides the Report and End User must not represent that Lotsearch or any of its Third Party Content Suppliers accepts liability to any such person or make any other representation to any such person on behalf of Lotsearch or any Third Party Content Supplier.
4. The End User hereby to the maximum extent permitted by law:
 - (a) acknowledges that the Lotsearch (nor any of its officers, employees or agents), nor any of its Third Party Content Supplier have any liability to it under or in connection with the

- Report or these Terms;
- (b) waives any right it may have to claim against Third Party Content Supplier in connection with the Report, or the negotiation of, entry into, performance of, or termination of these Terms; and
 - (c) releases each Third Party Content Supplier from any claim it may have otherwise had in connection with the Report, or the negotiation of, entry into, performance of, or termination of these Terms.
5. The End User acknowledges that any Third Party Supplier shall be entitled to plead the benefits conferred on it under clause 4, despite not being a party to these terms.
 6. End User must not remove any copyright notices, trade marks, digital rights management information, other embedded information, disclaimers or limitations from the Report or authorise any person to do so.
 7. End User acknowledges and agrees that Lotsearch and Third Party Content Suppliers retain ownership of all copyright, patent, design right (registered or unregistered), trade marks (registered or unregistered), database right or other data right, moral right or know how or any other intellectual property right in any Report or any other item, information or data included in or provided as part of a Report.
 8. To the extent permitted by law and subject to paragraph 9, all implied terms, representations and warranties whether statutory or otherwise relating to the subject matter of these Terms other than as expressly set out in these Terms are excluded.
 9. Subject to paragraph 6, Lotsearch excludes liability to End User for loss or damage of any kind, however caused, due to Lotsearch's negligence, breach of contract, breach of any law, in equity, under indemnities or otherwise, arising out of all acts, omissions and events whenever occurring.
 10. Lotsearch acknowledges that if, under applicable State, Territory or Commonwealth law, End User is a consumer certain rights may be conferred on End User which cannot be excluded, restricted or modified. If so, and if that law applies to Lotsearch, then, Lotsearch's liability is limited to the greater of an amount equal to the cost of resupplying the Report and the maximum extent permitted under applicable laws.
 11. Subject to paragraph 9, neither Lotsearch nor the End User is liable to the other for:
 - (a) any indirect, incidental, consequential, special or exemplary damages arising out of or in relation to the Report or these Terms; or
 - (b) any loss of profit, loss of revenue, loss of interest, loss of data, loss of goodwill or loss of business opportunities, business interruption arising directly or indirectly out of or in relation to the Report or these Terms,
 irrespective of how that liability arises including in contract or tort, liability under indemnity or for any other common law, equitable or statutory cause of action or otherwise.
 12. These Terms are subject to New South Wales law.

